



ING. L. & A. BOSCHI
IMPIANTI LIQUEFAZIONE E PRODUZIONE GAS TECNICI

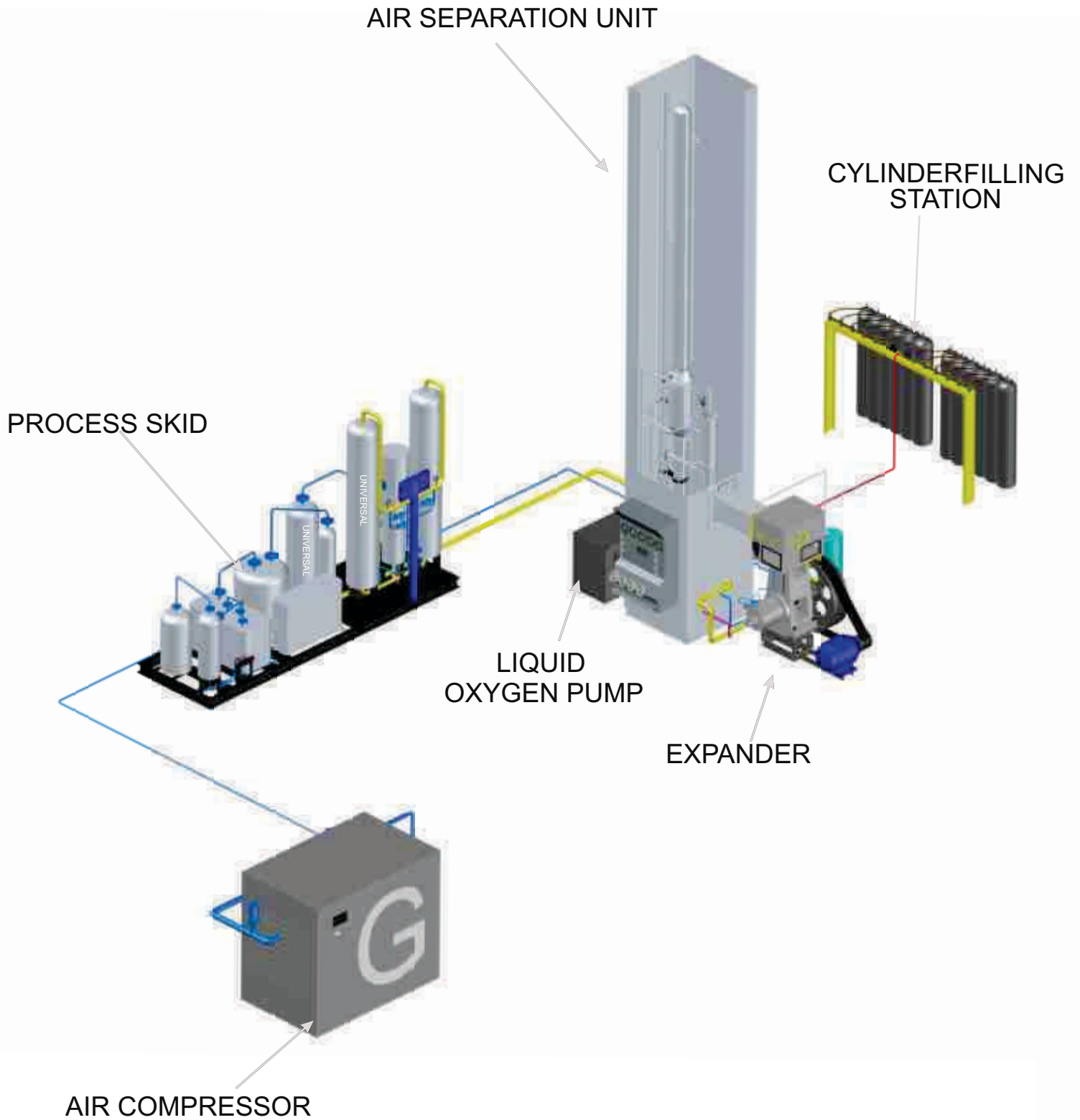
UBP-50 OXYGEN/NITROGEN PLANT

3D&2D VIEWS

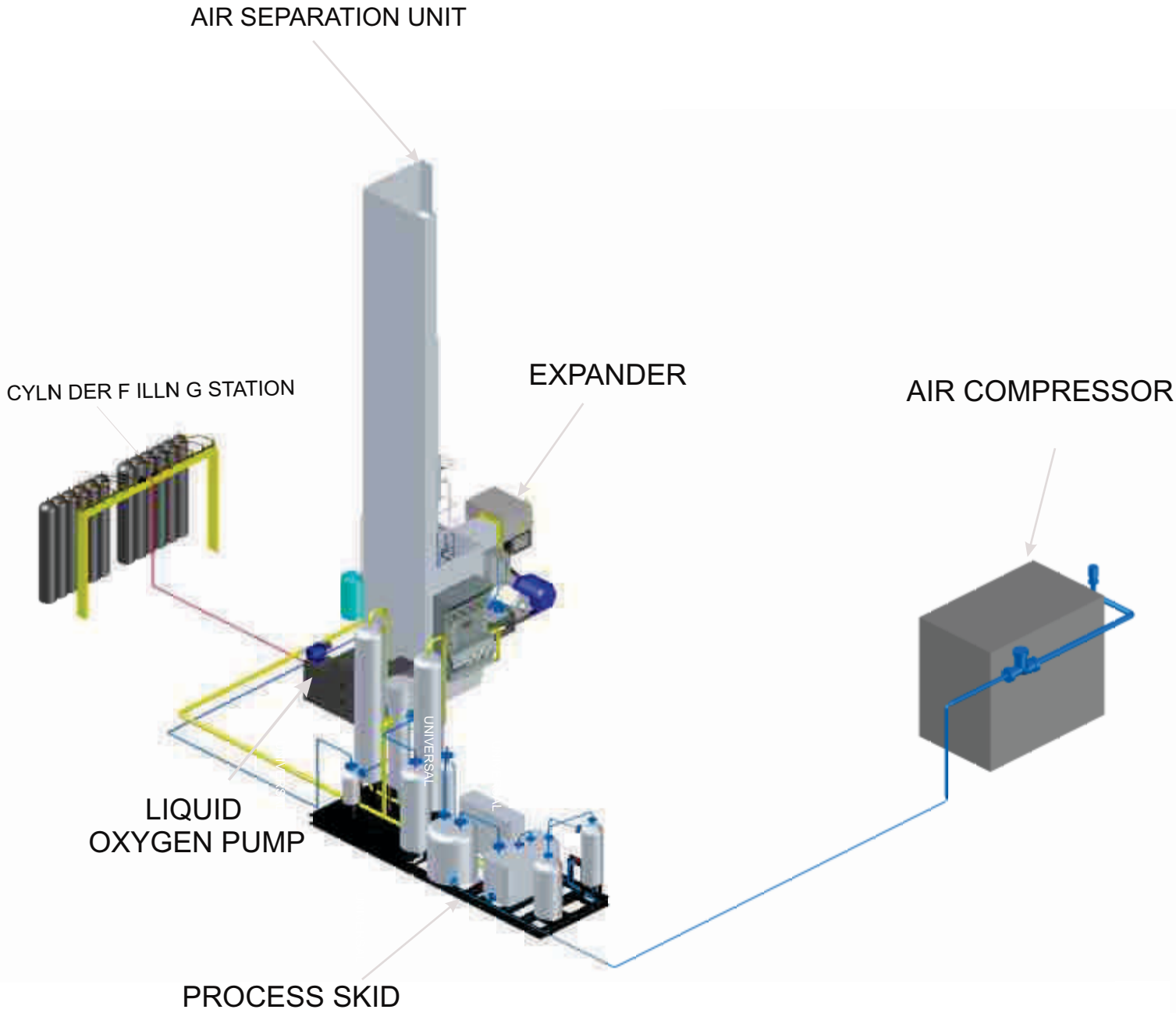


UNIVERSAL INDUSTRIAL PLANTS MFG. CO.(P) LTD.

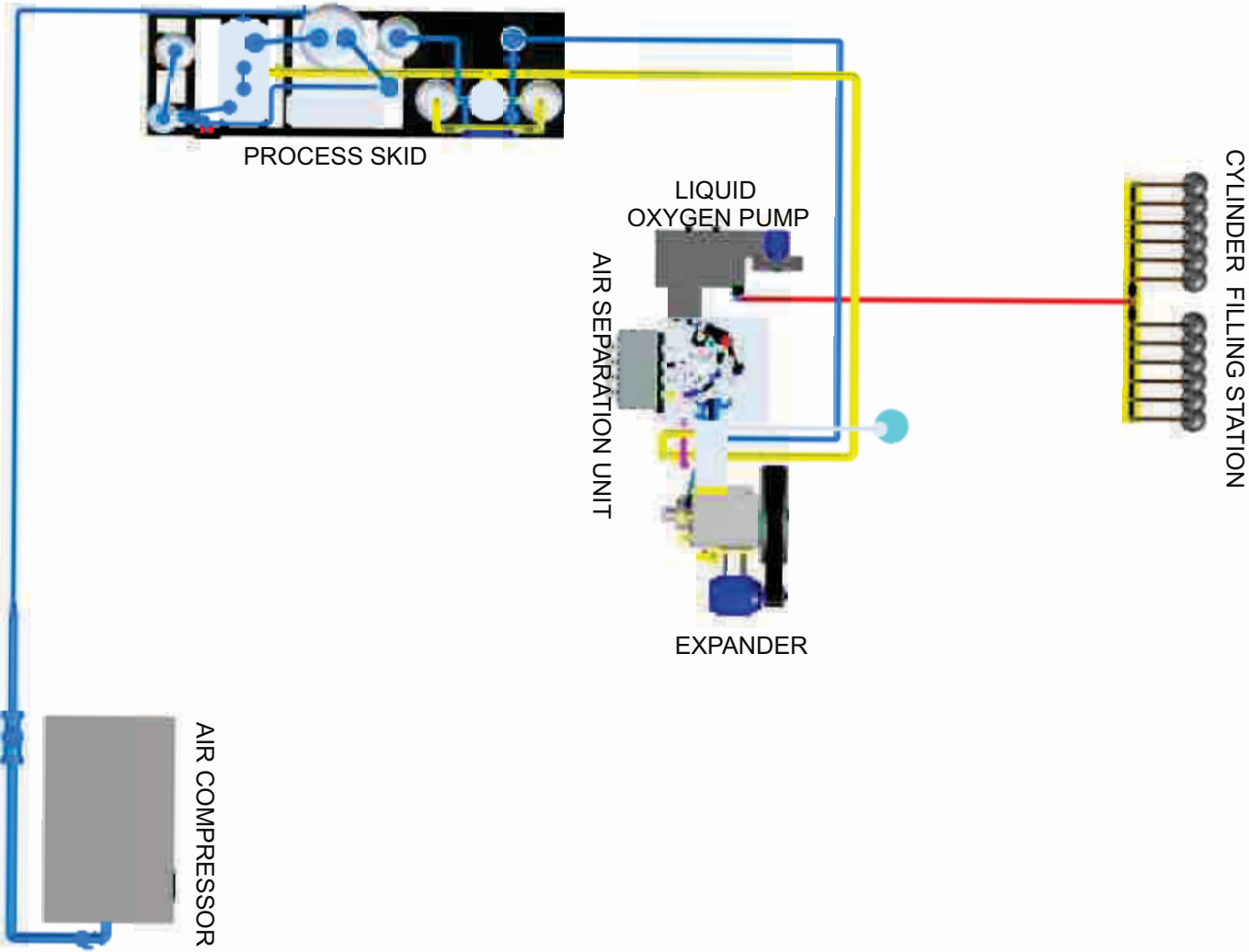
3D UBP - 50 VIEW_SE



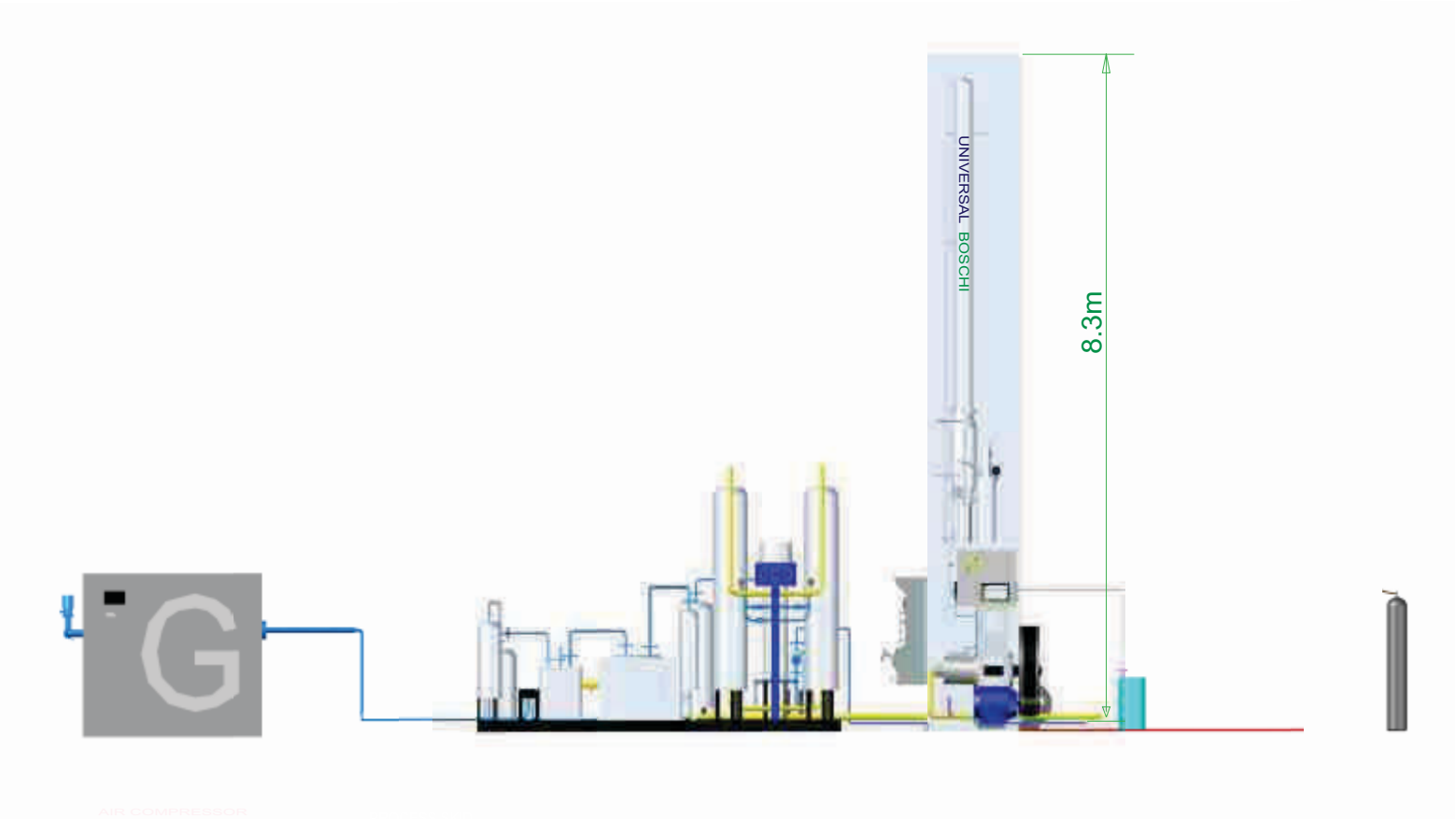
3D UBP -50VIEW SW



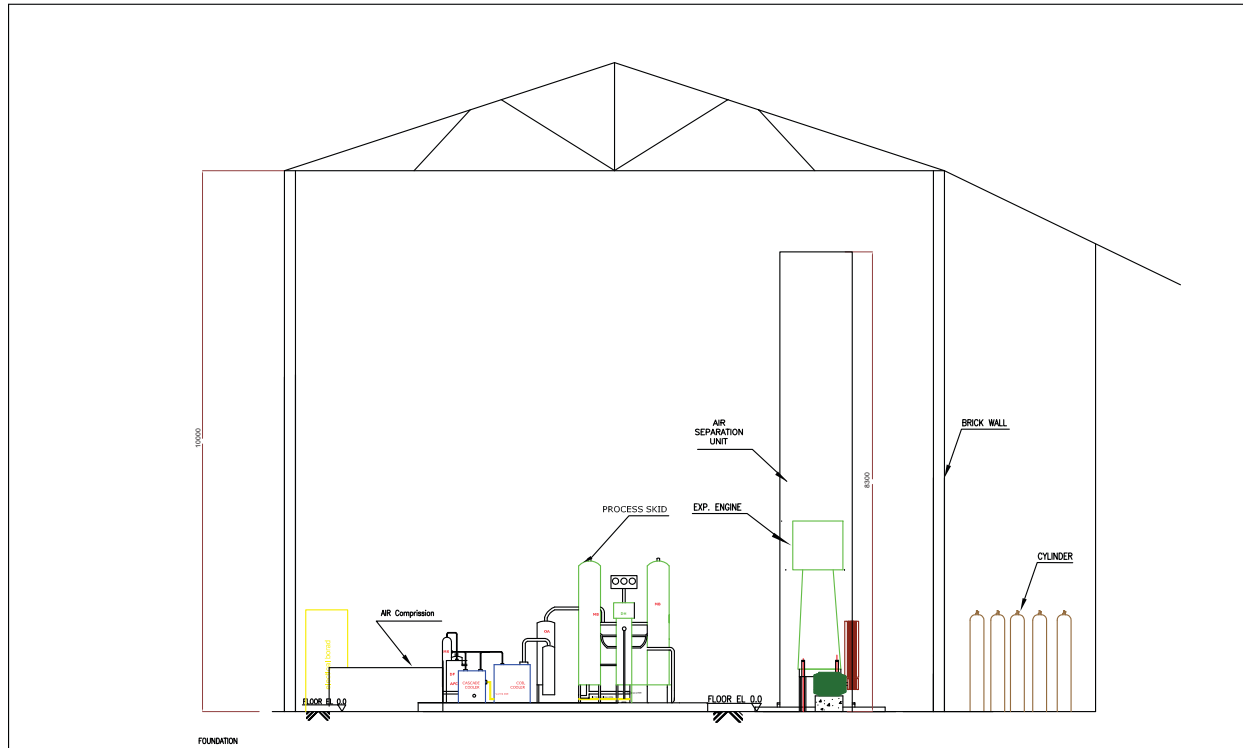
LAYOUT PLAN FOR UBP - 50 PLANT



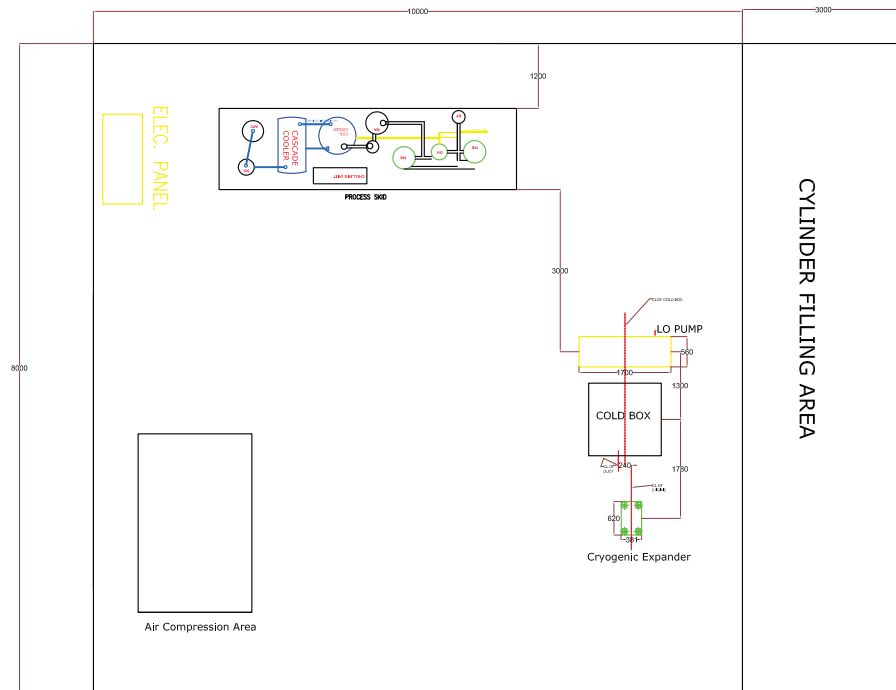
3D UBP - 50 FRONT VIEW



UBP - 50 PLANT LAYOUT



FOUNDATION

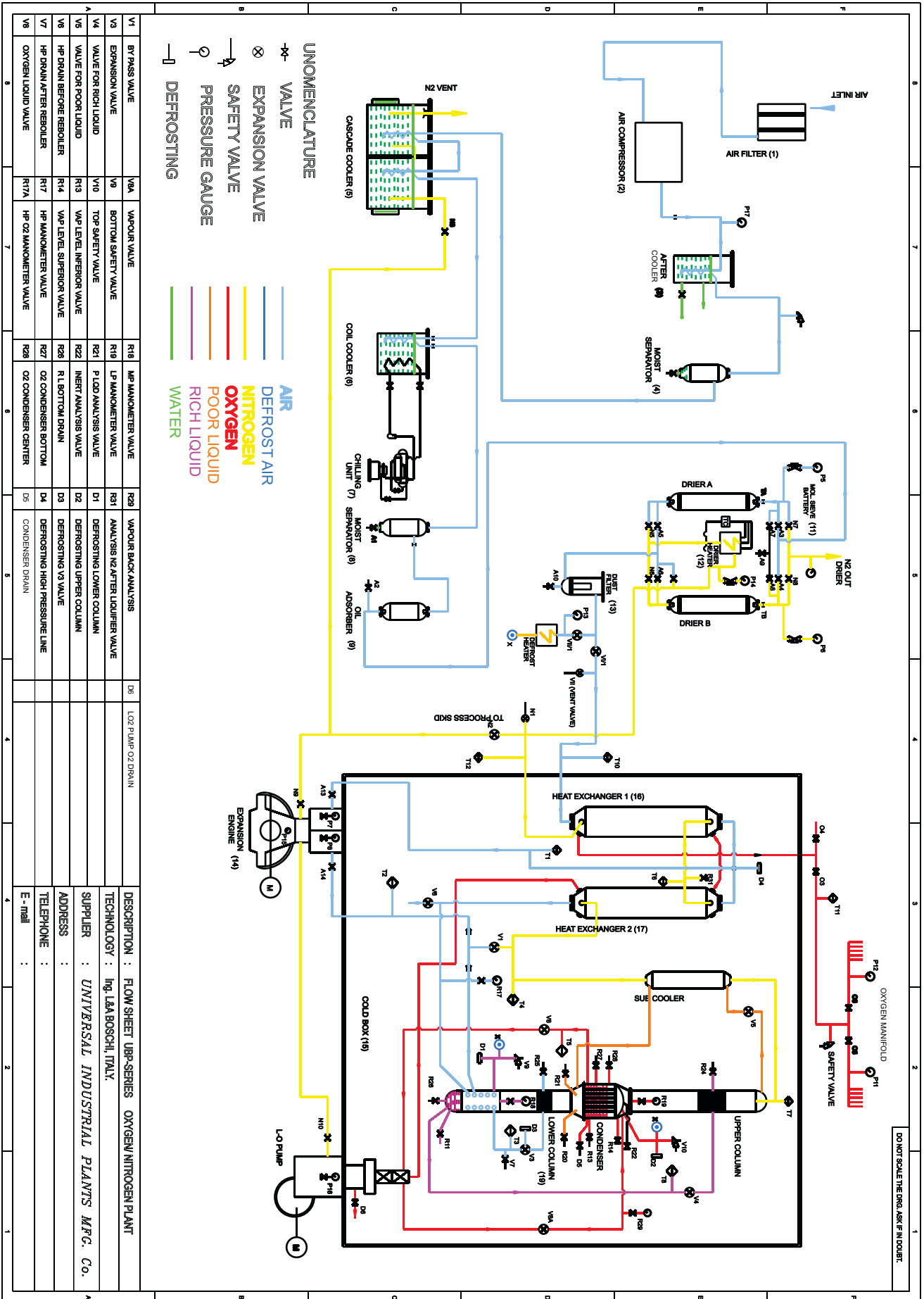


- NOTES:-**
1. THE FOUNDATION HAS BEEN DESIGNED FOR A SOIL BEARING CAPACITY OF 12500KG/M2
 2. THE FOUNDATION SHALL BE ON A VIRGIN SOIL AND SHALL BE ISOLATED ALL LEVELS FROM THE MAIN BUILDING AND FROM OTHER FOUNDATION.
 3. THE FOUNDATION SHALL NOT BE USED AS A BEARING STRUCTURE FOR OTHER FOUNDATION.
 4. IN DOUBTFUL CASE WE RECOMMEND TO CONSULT CIVIL ENGINEER, HOW EVER DATA REQUIRED BY THE CIVIL ENGINEER SUCH AS THE WORKING OF THE MACHINE AND LOADING DATA CAN BE HAD FROM US.
- DF = DUST FILTER
 MB = MS. BATTERY
 DH = DRIER HEATER
 OA = OIL ABSORBER
 MS = MOISTURE SEPRATER
 AFC = AFTER COOLING

ALL DIMENSION ARE IN MM.

No.UBP-30/02/0012		PROJECTION	CLIENT:
Scale	Designed UNIVERSAL		
N.T.S	Drawn SONU		
Checked S.A	Appr. Date 08/01/13		
TITLE		PLAN LAYOUTSOM3/HR (UBP - 50)	
UNIVERSAL INDUSTRIAL PLANTS MFG. CO.(P). LTD.,			

UBP - 50 PLANT FLOW SHEET



DO NOT SCALE THE DRG. ASK FR INQUIRY.