

Laboratory-Scientific Equipment, Suction units, Autoclave Sterilizers

Equipos de laboratorio, unidades de succión, esterilizadores autoclave,

Équipement de laboratoire, unités de succion, stériliseurs autoclave,

Laborausrüstung, Sauggeräte, Autoklav Sterilisatoren,

実験装置、吸引器、オートクレーブ、

Медицинское лабораторное оборудование, всасывающие приборы,
автоклавные стерилизаторы,



GEMMY INDUSTRIAL CORP.



Gemmy Industrial Corp.

The Symbol of Excellence

Having accumulated more than 36 years of experience and expertise, Gemmy Industrial Corp. is now a top-notch manufacturer of high-end medical equipment in Taiwan. The President of GEMMY was the former Chairman of Taiwan Medical & Biotech Equipment Industry Association.

With quality in mind, the company has passed certification by key quality management systems including ISO9001:2015 and ISO13485:2016 and GMP (in 2001). We are also the qualified manufacturer accredited by Japan

Gemmy's strong R&D capability enables it to supply a wide range of high-level medical equipment, including laboratory equipment, suction units and autoclave sterilizer etc. These products have been enjoying strong sales in more than 100 countries around the world, including the U.S., Germany, Japan, the U.K., France, and Italy, and the company is very proud of the good reputation it has earned among its customers worldwide. Gemmy says that its products all feature reasonable & affordable prices, good & High quality, and the best of after-sale services.

With the rapid changes in world markets and the trend toward globalization, Gemmy has had plans to reinforce its R&D department so that it can develop more sophisticated new products such as CO2 incubators, Blood Typing & Antibody Screening centrifuge and state-of-the-art centrifuges.

=====

Habiendo acumulado más de 36 años de experiencia y conocimientos, Gemmy Industrial Corp. es actualmente un fabricante de primera clase de equipos médicos de alta gama de Taiwán y un miembro de la Asociación Médica de Taiwán y Asociación de la Industria de Equipos Biotecnológicos.

Teniendo en mente la calidad, la compañía ha obtenido la certificación de los principales sistemas de gestión de calidad incluyendo ISO9001 e ISO13485 (por DNV, Noruega en 2003) y GMP (en 2001).

La potente capacidad de R + D de Gemmy le permite abastecer una amplia gama de equipamiento médico de alto nivel, incluyendo equipos de laboratorio, unidades de succión, esterilizadores autoclave. Estos productos gozan de fuertes ventas en más de 100 países de todo el mundo, incluidos los EE.UU., Alemania, Japón, Reino Unido, Francia e Italia, y la compañía se siente muy orgullosa de la buena reputación que se ha ganado entre sus clientes en todo el mundo. Gemmy declara que todos sus productos cuentan con unos precios razonables, buena calidad, y el mejor de los servicios post-venta.

Con los rápidos cambios en los mercados mundiales y la tendencia hacia la globalización, Gemmy declara que tiene intención de reforzar su departamento de I + D para así poder desarrollar nuevos productos más sofisticados, tales como las incubadoras de CO2, centrifuga Refrigerada, Grupo Sanguíneo y Anticuerpos Testin g Centrifuga con tecnología de vanguardia.

=====

New Products under development:

1. Automatic Blood ABO/Rh(D) Typing & Grouping Machine:

To prevent the Risks over the mistaken examination manually by medicine personnel

2. Monitoring CO² + O² Incubator

Program to store and monitor the cell incubation, no need open door.

3. Refrigerated Centrifuge

Automated Blood Grouping Machine

Revolutionary method for Blood typing & Antibodies Cross-Matching

Beyond Antihuman Globulin-AHG, the manual Polybrene test creates simple, rapid, safe and low cost procedure for detection of Red Cell antibodies.

Substitute the manual examination:

- "Class III" medical device
- Enter the new era of Blood Typing and antibody Screening
- Free from the possible RISKS caused by human negligence or errors.
- Fast testing to complete the blood typing in 4 minutes
- Fast testing to complete the cross-matching in 4 minutes
- Automated Double check and Re-confirm the accuracy by machine
- Low cost that everyone can afford it.
- No limit the specimen number, just do it anytime, convenient and manageable
- Easy operating process and automatic ascertain blood types and store the testing result

Supply the complete set of Blood Typing:

- Equipment for ABO/Rh(D) blood types
- Consumables for testing
- Antibody Reagent



Probably the "number 1" and only 1 manufacturer in Asia and Oceania

Universal Centrifuge

PLC-036 series

Built-in Power Stabilizer (88V ~ 264V)



PLC-036
(Brush motor)



PLC-036H
(Brushless motor)



PLC-036HS
(Brushless motor)

- These centrifuge function to separate Blood Cells for general purpose, PRP & Biochemistry in Hospital, Clinics, Lab center or School.
- ERROR Detection and ROHS compliant
- Universal voltage 100V ~ 240V, 50/60Hz
- Module Microprocessor- based control system
- Function to stabilize power preventing from voltage surge accidentally.

Solely for PLC-036HS:

- RPM / RCF convertible
- Rotors recognized program
- 4-digit rpm Display for more accurate
- Power stabilization function
- Optional for UPS

Intended use:

Clinical or other purpose. Used mainly in the clinical laboratory to separate the components of suspensions through low- or medium-speed centrifugal force. If relevant, all levels of health care with laboratory. Ideal use in clinical laboratory, histology, haematology, immunology, microbiology, pathology, serology and toxicology.

Specification:

Model	PLC-036	PLC-036H	PLC-036HS
Overall dimension (±5mm)	320 x 400 x 330mm	320 x 400 x 330mm	320 x 420 x 325mm
Drive motor	Brush motor, 100W	Brushless, 153W, 24VDC	Brushless, 153W, 24VDC
Speed indicator	LED, 3-digit x 100rpm	LED, 3-digit x 100rpm	LED, 4-digit x 10rpm
Speed control	Microprocessor	Microprocessor	Microprocessor
Timer	LED digital, 0-99 min.	LED digital, 0-99 min.	LED digital, 0-99 min.
Speed (rpm)	0 – 12000rpm	1000 – 15000rpm adjustable	1000 – 15000 rpm adjustable
Brake	Automatic braking system	Automatic braking system	Automatic braking system
Safety interlocking lid	Yes	Yes	Yes
Imbalance detection	Yes, alarm & brake	Yes, alarm & brake	Yes, alarm & brake
Overheat alarm	Yes	Yes	Yes
Emergency STOP	Yes	Yes	Yes

Rotor ordering Information :

Rotor	Tubes x No.	Max RPM / RCF
A-1820	1.5ml (or 2.0ml) x 18	14,000rpm / 16,083 xg
A-2420	1.5ml(or 2.0ml) x 24 tube	15,000 rpm / 20,630 xg
A-2420A	Combination of :	Combination of :
	1.5ml / 2.0ml x 24:	15,000 rpm / 20,630 xg
	- 2.0ml x 12 tubes	15,000 rpm / 15,672 x g
	- 1.5ml x 12 tubes	15,000 rpm / 16,350 x g
A-3202	0.2ml x 32 (micro-plate)	15,000 rpm / 15,659 xg
A-0815	15 (or 10)ml x 8 tubes	5,000 rpm / 2,949 xg
A-1215	15 (or 10)ml x 12 tube	5,000 rpm / 3,172 xg
A-2405	5 ml x 24 tubes	5,000 rpm / 2,865 xg
H-0450	50 l x 4 tubes	5,000 rpm / 3,284 xg
F-2415	0.75ml x 24 tubes	12,000 rpm / 14,490 xg or
For HCT	24 Capillary tubes	13,000 rpm / 17,005 xg
A-1550	50ml x 4 + 15ml x 4	4500rpm / 2597 or 2476xg



A-0815 A-1215 A-2405



A-2420 A-2420A A-1820



A-0450 A-1550 F-2415

Tube Holder Available :

Dimension	Suggested tubes
14mm (I.D.) x 66mm (H.)	4 ~ 8ml (12 x 75mm or 100mm)
17mm (I.D.) x 90 ~ 97mm (H.)	8.5 ~15ml. (16 x 100 or 17 x 117/120mm)
30mm (I.D.) x 102mm (H.)	50ml (29 x 107mm, or 29 x 115mm)

NOTE: All tubes within the sizes of tube adaptors are available.

Table Top Centrifuge

PLC-066 (Brushless)

- Brushless drive motor, maintenance free, quiet use.
- Power stabilizer 88V ~ 264V preventing voltage surge accidentally
- Power available from 100 ~ 240V, 50/60Hz
- Safety Lid locking system that can't be opened during spinning
- RPM / RCF convertible & displayed automatically
- QUALITY guaranteed
- GMDN Code: 36465



Intended Use:

Clinical or other purpose. Used mainly in the clinical laboratory to separate the components of suspensions through low- or medium-speed centrifugal force. If relevant, all levels of health care with laboratory. Ideal use in clinical laboratory, histology, haematology, immunology, microbiology, pathology, serology and toxicology.

This centrifuge provides a desired testing within the range of 1000 – 4300rpm for different test tubes containing diagnostic specimens for blood separation of Red blood cell, Leucocytes, plasma, serum, platelet, urine etc. for qualitative or quantitative test procedures. Then further with diagnostic examination and checkup for general purpose, PRP, or the related disease syndrome of the patients. It is ideal for use in hospital, Clinics, Laboratory Center.

Technical Data:

- Automatic imbalance detection system prevents damage by gently bringing rotor to a complete stop
- Manual over-ride lets you open lid easily in case of power failure.
- Module microprocessor-based circuit board ensures excellent performance and easy for maintenance
- Lid can't be opened only when power is switched on.
- Safety interlocking system. LID can't be opened while rotor is spinning unless the set time has elapsed.

Specifications

Model	PLC-066(Brushless)
Overall dimension	410 x 460 x 325mm approx.
NW / GW (kg)	21.0 / 26.5 kg approx.
Brushless drive motor	DC24V, 116W
Speed range	1000 ~ 4300rpm (4-digit), 10rpm increment
Rotor	Various, interchangeable
Timer	2-digital, 99 min. LED digital
Control system	Microprocessor controlled system
ERRORs detection	Yes, 5 errors detection
Imbalance detection	Yes, alarm and shutout
Braking system	Automatic braking system
Interlocking lid	Yes
Lid open override device	Yes
Overheat alarm	Yes
Standards	ISO9001/13485, CE, GMP, USFDA

Rotors Available (Choice of Swing-out or Fixed angle)

Cat. #	Capacity	Max RPM / RCF
S-0815P	8 x 10-15ml (Plastic adaptor)	4300 / 3018 g
S-0815S	8 x 10-15ml (stainless steel)	4300 / 3018 g
S-0450S	4 x 50ml (swing-out)	4300 / 2886 g
A-0450	4 x 50ml (angle)	4300 / 2253 g
A-0815	8 x 10-15ml (angle)	4300 / 2181 g
A-1215	12 x 10-15ml (angle)	4300 / 2348 g
A-1550	4 x 15 + 4 x 50ml (mixed)	4300 / 2253 g
A-2405	24 x 5ml (angle)	4300 / 2119 g

S: Stainless steel tube adaptor
P: Plastic (nylon) tube adaptor

Remarks: All measurements are approximated and is subject to change

Rotors Available



(Manufacturer & Exporter)

GEMMY INDUSTRIAL CORP.

7F. No. 106, Min Chuan West Road, Taipei, Taiwan

Email: 1) gemmy888@ms14.hinet.net; 2) gemmy888@gemmy.com.tw

http://www.gemmy.com.tw

Fax: 886-2-25538389, 02-25573218

Tel: 886-2-25531456



Dun & Bradstreet DUNS No. 656777729
TUV Rheinland Verification 000004807 5002

Universal Centrifuge

PLC-048

Swing-out (Horizontal) Rotor

- 15ml x 32 Tubes (Max 480ml)
- 50ml x 16 Tubes (Max 800ml)
- 5 ~ 10ml x 48 tubes
- 1.5 / 2.0mm x 80 tubes



Features :

- Ideal for General purpose and **PRP** in hospital
- RoHS, REACH compliant
- Stainless steel interior chamber
- Imbalance alarm & stop
- Safety Interlocking and shutout system
- Brushless DC drive motor, maintenance free
- Function to **stabilize voltage** preventing power surge.
- In case of power failure, **Battery operated** is also available which is upon request for extra cost.
- Manual override lets you open lid in case of power failure.
- Automatic braking system brakes to complete stop gently in 30 seconds when the set time is elapsed, preventing test tubes from breaking or specimens from remixing.
- Module microprocessor-based circuit board ensures excellent performance and easy for maintenance.
- Safety interlocking system. LID can't be opened while rotor is spinning unless the set time has elapsed.
- Transparent viewfinder on top of lid to view the rotor spinning without opening LID.

Intended use :

Clinical or other purpose. Used mainly in the clinical laboratory to separate the components of suspensions through low- or medium-speed centrifugal force. If relevant, all levels of health care with laboratory. Ideal use in clinical laboratory, histology, haematology, immunology, microbiology, pathology, serology and toxicology.

This centrifuge provides a desired testing within the range of 1000 – 3500rpm for different test tubes containing diagnostic specimens for blood separation of Red blood cell, Leucocytes, plasma, serum, platelet, urine etc. for qualitative or quantitative test procedures. Then proceed with the further diagnostic examinations and checkup for general purpose, PRP, or the related disease syndrome of the patients.

Specifications :

Overall dimension	480 x 590 x 380mm approx.
Control	Microprocessor controlled system
N.W. / G.W.	48.0 / 50.0 kg approx.
RPM / RCF	Automatic conversion
Speed range	LED 4-digit, 1000 ~ 3500 rpm
Speed increment	100 rpm
Maximum RCF	Maximum fixed at 2328 x g
Maximum volume	800 ml (16 x 50ml)
Timer (LED digital)	0 ~ 99 min adjust. 1 min increment
Emergency STOP	Yes
ERROR detection	Yes (5 errors detection)
Motor	Brushless DC motor, DC315V, 600W
Power supply	110V or 230V (±10%), 50/60Hz
Chamber	Stainless steel #304

Tube Holders (Max 3500 rpm, RCF 2328xg)

Catalog #	Volume	Tube Holders Size
SW-1580	1.5/2.0ml x 80 tube	Ø11 x 30 mm (D.)
SW-0548	5 ~ 10ml x 48 tube	Ø17.2 x 58 mm (D.)
SW-1532	10 ~ 15ml x 32 tube	Ø17.6 x 73.2mm (D.)
SW-5016	50 ml x 16 tube	Ø30.0 x 73.2mm (D.)



Swing-Out Rotor

Centrifuge

PLC-025

- GMDN code 36465
- Brushless drive motor, maintenance free
- RPM /RCF Display and conversion
- Choice of swing-out rotor and fixed angle rotor
- Imbalance alarm & shutout
- Interlocking lid system (Lid can't be opened during spinning)
- Lid-open override device in case of power failure
- Automatic braking system within 1 minute
- Errors self-diagnostic detection (5 errors)
- Emergency STOP
- Ideal for general purpose or PRP use in hospital & clinic
- The universal power source from **100V~240V, 50/60Hz**
- Built-in power stabilizer within **100V~240V** preventing power surge accidently



Intended use:

A device that is a general-purpose laboratory centrifuge used to separate the components of suspensions by the application of centrifugal force. This device is intended to centrifuge patient samples, e.g. body fluids, either alone or after addition of reagents or other additives before measuring analytes. It is typically a low speed (up to 6000rpm) or medium speed (up to 12000rpm) machine. Ideal for use in clinical laboratory, histology, haematology, immunology, microbiology, pathology, serology and toxicology.

This centrifuge provides a desired testing within the range of 1000 ~ 4000rpm for different test tubes containing diagnostic specimens for blood separation of red blood cell, Leucocytes, plasma, serum, platelet, urine etc. for qualitative or quantitative test procedures. Then proceed with diagnostic examinations and checkup for general purpose.

Specifications:

Overall dimension	360 x 450 x 345mm
Net weight	24 kg (not include buckets)
Speed range	100~4000rpm adjustable
Max RCF	2639 x g, LED digital display
Rotor type	Swing-out or fixed angle
Motor	Brush-less, 250W
Timer	2-digital, 99 min, LED digital
Imbalance detection	Yes, alarm and shutout
Errors detection	Yes, automatically
Brake	Automatic braking system
Interlocking lid	Yes
Lid open override device	Yes,
Noise level	56 ~ 62 dB
Overheat alarm	Yes
Power source	100V ~ 240V, 50/60Hz

Buckets (Tube carriers)

Bucket	Capacity / Tubes	Max RPM / RCF
M-1560	1.5ml x 60 tubes	4000 / 2639 xg
M-2260	2.2ml x 60	4000 / 2639 xg
M-0548	5.0ml x 48	4000 / 2639 xg
T-1516	15ml x 16	4000 / 2639 xg
T-5004	50ml x 4	4000 / 2639 xg
A-1615	15ml x 16 (Fixed angle)	4000 / 2639 xg



Technical Data:

- Sophisticated module electronic circuit for easy maintenance.
- Stainless steel interior chamber and exterior body with powder coating easy for cleaning and scratch free.
- Indicators: Power, Timer, RPM/ RCF, LID OPEN, LID LOCK, Alarm, SPIN (SV), STOP, START
- Module Microprocessor-based circuit ensures excellent performance and easy for maintenance.
- Errors detection: Imbalance, Disengaged connector, overload, Driver overheat, Motor overheat.
- Convert RPM and RCF readings automatically from one to the other just press the keypad slightly.

Count on us for Excellent Quality, The Best After-Sales Services.

(Manufacturer & Exporter)

GEMMY INDUSTRIAL CORP. (Manufacturer & Exporter)

7F. No. 106, Min Chuan West Road, Taipei, Taiwan

Email: 1) gemmy888@ms14.hinet.net; 2) gemmy888@gemmy.com.tw

http://www.gemmy.com.tw

Fax: 886-2-25538389, 25573218

Tel: 886-2-25531456-7, 25534298-9,



Dun & Bradstreet DUNS No. 65677729
TUV Rheinland Verification 000004807 5003

Table Top Centrifuge

PLC-016

- Brushless drive motor, maintenance free, quiet use.
- Power stabilizer 100V ~ 240V preventing voltage surge accidentally
- Functions RPM / RCF conversion & display
- Power available from 100 ~ 240V, 50/60Hz

Intended Use :

Clinical or other purpose. Used mainly in the clinical laboratory to separate the components of suspensions through low- or medium-speed centrifugal force.

If relevant, all levels of health care with laboratory. Ideal use in clinical laboratory, histology, haematology, immunology, microbiology, pathology, serology and toxicology.

This centrifuge provides a desired testing within the range of 1000 – 4000rpm for different test tubes containing diagnostic specimens for blood separation of Red blood cell, Leucocytes, plasma, serum, platelet, urine etc. for qualitative or quantitative test procedures. Then further with diagnostic examination and checkup for general purpose, PRP, or the related disease syndrome of the patients. It is ideal for use in hospital, Clinics, Laboratory Center.

Specifications & Features :

Model	PLC-016
Overall dimension (mm)	545 x 500 x 350mm (±5mm)
NW / GW (kg)	30 / 33.5 kg approx. (66 / 83.7 Lbs)
RPM / RCF conversion	Yes, Press keypad to set and display
Speed range	1000 ~ 4000 rpm (4-digit)
Drive motor	Brushless, DC24V, 250W
Rotor	Swing-out and fixed rotor interchangeable
Timer	2-digital, 99 min. LED digital
Control system	Microprocessor controlled system
ERRORs detection	Yes, 5 errors detection
Imbalance detection	Yes, alarm and shutout
Braking system	Automatic braking system
Interlocking lid	Yes, Lid can't be opened during spinning
Lid open override device	Yes, manually
Overheat alarm	Yes
Standards	ISO9001/13485, CE, GMP, USFDA

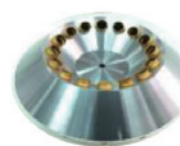
Rotor Available : (3 types)

Cat #	capacity	RPM / RCF
A-1615	16 x 15ml (angle)	4300 / 3049g
A-1550	4 x 15+50ml (mixed)	4000 / 2051/1956g
A-2415	24 x 15ml (angle)	4000 / 2966g
S-0650S	6 x 50ml (swing-out)	4000 / 2771g
S-0450S	4 x 50ml (swing-out)	4000 / 2497g
S-0815P	8 x 15ml (swing-out)	4000 / 2628g
S-0450P (PRP)	38 x 128.5mm (PRP)	4000 / 2960g
S-1615S	16 x 15ml (Swing-out)	4000 / 2898g
S-0850S	8 x 50ml (swing-out)	4000 / 2486g
M-4002P	40 x 2.0ml (swing-out)	4000 / 2879g
M-3205P	32 x 5ml (swing-out)	4000 / 2879g

A) Fixed Angle Rotor



A-1550 (15x 15+50ml)



A-1615 (16 tube)



A-2415 (24 tube)

B) Swing-out Rotor Available



S-0815P (8 x 15ml)



S-0450S (4 x 50ml)



S-0650S (6x50ml)

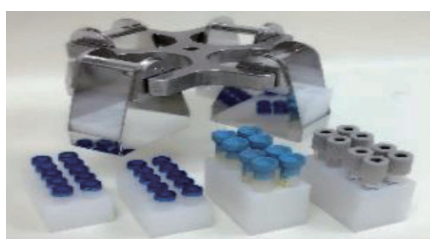


S-1615S (16x15ml)



S-0850S(8x50ml)

C) Swing-out Rotor Available



M-4002P (40 X 2.0ml)
M-3205P (32 x 5.0ml)
(Other sizes are available too)

D) Swing-out Rotor for PRP use

Model: S-0450P



- Tue adaptor: Ø40mm (I.D.) x 118mm (L.)
- Applied PRP tube: 38mm x 128.5mm

Table Top Centrifuge

- **The Best-Selling & Most-Valued Product**
- **Affordable Price & Excellent Quality**



A-0815 (8 x 15ml)



A-1215 (12 x 15ml)



(Choice of Safety Locking Lid)



Option for DC Drive
Apply to use in Car
Good for AC / DC

Code	PLC series
Dimension	26 x 26 x 26.5cm approx.
Rotor	Fixed angle
Max Capacity	12 tubes x 15ml (or 10ml)
Timer (Mechanical)	60 minutes
Speed range	1000 – 4000 (or 4500rpm)
Fixed speed (Option)	3000 or 3500 rpm
Safety shutout system	Option (shutout + Locking lid)
Standard	ISO9001, ISO13485, GMP, CE marking, USFDA
Net weight	8 kg or 17.64 lbs.

Specifications : Ordering information

Model	Capacity	Rotor	Max rpm	Max RCF
PLC-01	4 x 15ml	A-0415	4500	2388xg
PLC-02	6 x 15ml	A-0615	4500	2388
PLC-03	8 x 15ml	A-0815	4500	2388
PLC-04	10 x 15ml	A-1015	4000	2030
PLC-05	12 x 15ml	A-1215	4000	2030

Suggested tubes :

Tube	Size
3 ~ 8ml	12 x 75-100mm
10ml	16 x 100mm
15ml	17 x 117mm (or 120mm)

Dimension, Tube Adapter :

A. 10ml or 15ml: 17mm (I.D.) x 90mm (H)

B. 3 ~ 8 ml: 14mm (I.D.) x 66mm (H)

【Place Adapter B into A to operate 3, 4, 5, 6, 7, 8ml tubes】

Order tube adapter B for 3 ~ 8ml for extra cost.



Intended Use :

Clinical or other purpose. Used mainly in the clinical laboratory to separate the components of suspensions through low- or medium-speed centrifugal force. If relevant, all levels of health care with laboratory. Ideal use in clinical laboratory, histology, haematology, immunology, microbiology, pathology, serology and toxicology

Technical Data :

- The **Best-Selling** centrifuge at inexpensive price that everyone can afford.
- Fixed-angle rotor features to collect sediment diagonally in the tubes. It creates the higher speed and RCF.
- Speed regulated from 1000rpm to the maximum within 15 seconds.
- Choice of variable speed regulation or fixed speed at 3000 or anywhere as requested.
- Choice of locking lid and automatic shutout safety system when lid is opened during spinning.
- Anti-vibration rubber buffer balances rotor when spinning, and also protect equipment during transportation.
- Timer activated centrifuge, the **LED pilot lamp** indicates the power is switched on.
- The heavy casting iron base and 3 rubber suction feet prevent the unit from creeping and moving.
- This unit complies with CE electromagnetic compatibility requirement of IEC/EN61010-1-1:2010 and council medical directive 2004/108/EC.

Universal Centrifuge

PLC-012E-012-024

- Best-Selling Centrifuge
- Affordable price
- Excellent Quality
- Various Rotor in one Centrifuge
- GMDN Code: 36465



Intended use

A device that is a general-purpose laboratory centrifuge used mainly to separate the components of suspensions through low-or-medium-speed centrifugal force. The device is intended to centrifuge patient samples, e.g. body fluids, either alone or after addition of reagents or other additives before measuring analytes. It is typically a low speed (up to 6000rpm) or medium speed (up to 12000rpm) machine. If relevant, all levels of health care with laboratory. Ideal use in hospital, clinical laboratory, histology, haematology, immunology, microbiology, pathology, serology and toxicology.

Specifications :

Code	PLC-012	PLC-012E	PLC-024
Overall dimension	310 x 360 x 310mm	310 x 360 x 310mm	440 x 470 x 420mm
Weight (N/G.)	15.0 / 16.5kg	15.0 / 16.5kg	24.5 / 27.5kg
Timer	Mechanical 60 min.	Digital 0-99 minutes	Digital 0-99 minutes
Speed control	Analog	Microprocessor	Microprocessor
Max speed *	12000rpm adjustable	12000rpm adjustable	3600rpm adjustable
Lid lock	Yes	Yes	Yes
Brake	Toggle switch	Toggle switch	Toggle switch
Safety shutout	Yes	Yes	Yes
Chamber	Stainless steel	Stainless steel	Stainless steel
Motor	Brush 100W	Brush 100W	Brush 250W
Power source	110 or 230V, 50/60Hz	110 or 230V, 50/60Hz	110 or 230V, 50/60Hz
Standard	ISO, CE, GMP, FDA	ISO, CE, GMP, FDA	ISO, CE, GMP, FDA



A-0450 A-1215 A-0815



A-2405 A-1550 F-2415

- * For safety purpose, maximum up to 5000rpm is recommended for fixed angle rotor
- * When rotor F-2415 is used for HCT testing, max speed is 12000rpm (±10%)



Technical Data:

- Variable speed control for all purposes sustains to separate substance, remove moisture or simulate gravitational effects.
- Air intake holds in the cap help keep centrifuge cool during the extended use.
- Safety locking latch and inter switch shut off motor automatically when lid is opened during spinning.
- Rotor changes are fast and simple with the quick-release rotor nut with an attached hexagon wrench.
- Modular electronic circuit easy for handling and maintenance.
- Press toggle switch and Brake to the complete stop within 15 – 20 seconds.

Rotor Available

Rotor	Capacity (ml)	Max RPM / RCF	Suggested tubes
		PLC-012, 012E	
A-0815	8 x 15 (or 10)	5000rpm / 2949xg	16x100 or 17x120mm (10 or 15ml)
A-1215	12 x 15 (or 10)	5000 / 3172g	16x100 or 17x120mm (10 or 15ml)
A-2405	24 x 5.0ml	5000 / 2865g	12mm x 75ml, round bottom
F-2415 (capillary)	24 x 0.75ml	12000 / 14490g	1.2mm x 75mm Capillary tube
A-0450	4 x 50ml	5000 / 3284g	30mm x 115mm

PLC-024	A-1050: 10 x 50ml	3700rpm / 2668 xg
	A-2415: 24 X 15ml	3600rpm / 2426 xg



GEMMY INDUSTRIAL CORP. (Manufacturer & Exporter)

7F. No. 106, Min Chuan West Road, Taipei, Taiwan
 Tel: 886-2-25531456' Fax: 886-2-25573218, 5538389
 Email: gemmy888@ms14.hinet.net; gemmy888@gemmy.com.tw
 http://www.gemmy.com.tw;



Dun & Bradstreet DUNS No. 656777729
 TUV Rheinland Verification 000004807 5002

Micro Haematocrit Centrifuge

GMDN #32429

- KHT-430B and PLC-036H: Built-in power stabilizer 100V~240V
- Other centrifuges are also applied for HCT testing when Rotor F-2415 is used
- PLC-036H, PLC-012E are working from 0 ~ 12000rpm
- KHT-430B, KHT-410E, KHT-400, PLC-012B are working at fixed 12000rpm

BEST SELLING Centrifuges
CHEAP PRICE
QUALITY EXCELLENT GUARANTEED



PLC-036H
(Brushless Drive)



PLC-012B



KHT-430B



Rotor: F-2415
(Capillary x 24 tubes)



Aluminum Reader



PLC-012E



KHT-400



KHT-410E

Intended use:

This is "Class 1" medical device, providing a speed of 12000rpm to separate the red blood cells, and define the volume percentage PCV of Red Blood Cells against the whole body reflecting the status of Red Blood Cells in patients with normal and abnormal, including anemia (Red blood cells abnormally total low) and polycythemia (Red blood cells abnormally increased). The normal value of HCT for male is 40 – 54% and 38 – 47% for female. It is also tested for Jaundice and also microbe immunity genetics and general clinic test. Ideal for use in hospital, clinic and lab center.

Specifications:

Model	KHT-410E	KHT-430B	KHT-400
		PLC-012B	
Dimension (W*D*H)	250 x 300 x 250mm	310 x 360 x 310mm	260 x 280 x 240 mm
N. weight (kg)	11.5 kg	16 / 17 kg	7.5 kg
Motor	Brush motor, 100W	Brush motor, 100W	Brush motor, 100W
Brake	Toggle switch in 20 sec.	Automatic brake in 20 sec.	Toggle switch in 20 sec.
Max speed (±10%)	Fixed 12000rpm ~ 13000rpm	Fixed 12000 ~ 13000rpm	Fixed 12000 ~ 13000rpm
Max RCF	14490xg	14490~17005xg	14490~17005xg
Timer	Digital 99 min	Digital 99 min	Mechanical 60 min
Safety locking lid	Yes	Yes	Yes
ERRORS detection	NA	NA	NA
Standard accessory	AL. Reader, Rotor F-2415	AL. Reader, Rotor F-2415	AL. Reader, Rotor F-2415
Power source	110 or 230V, 50/60Hz	110V or 230V, 50/60Hz	110V or 230V, 50/60Hz
Standards	ISO, CE, GMP, USFDA	ISO, CE, GMP, USFDA	ISO, CE, GMP, USFDA

Capillary tube: 1.1 – 1.2mm (I.D.), Wall 0.2mm + 0.02mm, Length 75mm

Safety locking system: Shut off power when lid is opened during motor spinning.

All measurements are approximated which are subject to change without advanced notice



Capillary tubes

Technical Data :

- Fast acceleration to max 12000 ~ 13000rpm (F-2415).
- Transparent viewer on top provides an easy investigation of rotor running.
- Module microprocessor-based circuit board ensures excellent performance and easy for maintenance.
- PLC-012E and PLC-036H: Choice of various rotors for the desired applications.



(Manufacturer & Exporter)

GEMMY INDUSTRIAL CORP.

7F. No. 106, Min Chuan West Road, Taipei, Taiwan

Tel: 886-2-25531456

Fax: 886-2-25538389, 25573218

Email: gemmy888@gemmy.com.tw; gemmy888@ms14.hinet.net

Http://www.gemmy.com.tw



Dun & Bradstreet DUNS No. 656777729
TUV Rheinland Verification 000004807 5002

Micro Hematocrit Centrifuge

KHT-410E series

Probably The Best-Selling Hematocrit Centrifuge In World.

Choice of various Features when Cost, Features, Motor are critical
Built-in Power Stabilizer from 88V~264V preventing voltage surge accidently

GMDN Code: 32429

IMPORTANT

Choice of various configurations when cost is critical:

- KHT-410E(a)**: Brush motor, manual brake, easy operation, low cost,
- KHT-410E(b)**: Brush motor, automatic braking system
- KHT-410E(c)**: **Brushless** motor, automatic braking system
 - Power applied to 100~240V, 50/60Hz, 1.2A/134W
 - ERROR self-diagnostic detection: Overheating, speed secured,
 - Brushless motor drive, 24VDC, 153W, automatic brake
 - Power stabilizer** ensures Voltage surge protection
 - Emergency STOP



KHT-410E (a)



KHT-410E(b)
(Brush motor)
(Automatic Brake)



Rotor: F-2415



Reader (aluminum)



KHT-410E(c)
(Brushless drive motor)
(Built-in Power stabilizer)

Specifications:

Model	KHT-410E(a)	KHT-410E(b)	KHT-410E(c)
Dimension (W*D*H)	250 x 300 x 250mm	250x 300 x 250 mm	250 x 300 x 250 mm
N. weight (kg)	11.5 kg	11.5 kg	11.5 kg
Motor	Brush AC motor, 100W	Brush AC motor, 100W	Brushless DC motor, 153W
Braking system	Switch brake manually	Automatic brake	Automatic brake
Max speed / RCF(±10%)	Fixed 12000rpm / 14490 xg	Fixed 12000rpm / 14490 xg	Fixed 12000 rpm / 14490 xg
Max RCF	14490xg	14490xg	14490xg
Timer	Digital 99 min adjustable	Digital 99 min, adjustable	Digital 99 min, adjustable
Safety locking lid	Yes	Yes	Yes
ERROR detection	NA	NA	Yes, 4 Errors self-diagnostic
Voltage surge protection	Fuse only	Fuse only	Yes, voltage stabilizer (88V~264V)
Emergency BRAKE	NA	Yes	Yes
Power source	110V 60Hz or 220V 50Hz	110V 60Hz or 220V 50Hz	Auto, 100V~240V, 50/60Hz

Capillary tube: 1.1 – 1.2mm (I.D.), Wall 0.2mm + 0.02mm, Length 75mm

Safety locking system: Shut off power when lid is opened during motor spinning.

Intended use:

- This centrifuge is "Class 1" medical device. It is used in Hospital and Clinics to separate the blood cells, provides a general clinic test to hematocrit value PCF, which defines the percentage of Red blood Cells against the whole body reflecting the status of Red Blood Cells. May be also used to detect the percentage of anemia or polycythemia.

Technical data

- Equipped with safety switch to cutoff power automatically when lid is opened during operation.
- Transparent viewer on top provides an easy investigation of rotor running.
- Module microprocessor-based circuit board ensures excellent performance and easy for maintenance.



GEMMY INDUSTRIAL CORP.

7F. No. 106, Min Chuan West Road, Taipei, Taiwan

Tel: 886-2-25531456 Fax: 886-2-25538389, 25573218

Email: gemmy888@gemmy.com.tw; gemmy888@ms14.hinet.net

Http://www.gemmy.com.tw



Dun & Bradstreet DUNS No. 656777729
TUV Rheinland Verification 000004807 5001

Hand-Tally Differential Counter

- 5 and 8 units Lab-count with Totalizer. For simplifying differential blood cell counts.
- Represents the normal Schilling groups of Leucocytes, i.e. Baso, Eosin., Seg., Lymph., Mono. (DBC-6) along with Myelo., Juven., Stab. (DBC-9 and DBC-8E). The above each key is the name and picture of particular cell.
- Each stroke registers both in the unit corresponding to its pressed key and in the totalizer.
- When a total of every 100 cells are counted, a bell rings or a sound buzzes. The process can be extended to 200, 300... etc.
- Counter clockwise rotate handle, it will clear all figures.
- Or just press "CLEAR" key to clear all figures (DBC-8E)
- DBC-8E functions CLEAR, Percentage, Decrease and Lock.

Model	DBC-6	DBC-9	DBC-8E
Leucocytes	5 units	8 units	8 units
Control	Mechanism	Mechanism	Microprocessor
Display digital	0-999	0-999	0-999
Alarm at 100	Yes	Yes	Yes
Net weight	1.1kg	1.3kg	1.5kg



DBC-9

DBC-6



DBC-8E

Binocular Microscopes

Model	PB-3620	PB-3720	PB-3320	PB-2520 (Digital)
Eyepiece	WF10X, WF16X	WF10X, WF16X	WF10X, WF16X	WF10X (Ψ20mm)
Magnification	40X – 1600X	40X – 1600X	40X – 1600X	40X – 1000X
Mechanical Stage	Double layers Size: 135 x 125mm Range: 75 x 35mm	Double layer 140mm x 140mm Moving: 70x50mm	Double layer 140mm x 130mm Moving: 70x50mm	Double layer 130mm x 120mm Moving: 70x30mm
Viewing head	Binocular measuring tube 45° angle inclined head (30° for PB-3620) and 360° rotation.			
Condenser	N.A. 1.25 Abbe condenser with iris diaphragm			
Objectives	Achromatic, 4X/0.10; 10X/0.25; 40X/0.65 (Spring); 100X/1.25 (Spring)(Oil)			
Inter-pupillary	Distance: 55mm – 75mm approx.			
Focusing control	Coaxial coarse & fine adjustment with rack and pinion mechanism. Fine focusing scale value = 0.002mm			
Illumination	6V 20W built-in brightness variable			



PB-3620



PB-3720



PB-3320



PB-2520 (Digital)

- Provides superior optical performance to suit a variety of viewing needs. Ideal for biological, bacteriological, pharmaceutical, pathological research in hospitals, laboratory clinics and particularly in school.
- Low-reflection coated optics reduce glare
- Choice of trinocular microscope. Anti-mildew lens are also available.

Digital Binocular Microscope : PB-2520

- Camera system: CMOS chip, 1.3 Mega Pixel
- Software: Photo snap, Video record. With measure function of the actual length/area/diameter/circumference/angle of object.

Dry Bath Incubators (Block Heaters)



Specifications :

Catalog no.	DB-006E DB-006M (microplate)	DB-006E-150	DB-006	DB-005
Overall dimension	370 x 245 x 145mm	295 x 290 x 110mm	370 x 240 x 115mm	215 x 230 x 115mm
Net weight	5.5 kg	6.0 kg	4.5 kg	3 kg
Temp setting/Reading	Digital (3-digit)	Digital (3-digit)	Analog/Thermometer	Analog/Thermometer
Temp range	Ambient to 99.9°C	Ambient to 150°C	25 – 105°C	25 – 105°C
Temp accuracy	±0.1°C	±0.1°C	±0.2°C	±0.2°C
Uniformity (at 37°C)	±0.2°C	±0.2°C	±0.5°C	±0.5°C
Temp sensor	PT-100	K-Type	* NTC	* NTC
Temp control	PID	PID	PID	PID
Overheat alarm	Yes	Yes	No	No
Heating element	450W	450 W	450W	200W
Timer (with HOLD)	Digital 99 hr. 59 min	Digital 99hr. 59 min	No	No
Optional accessory	Transparent Lid	Transparent Lid	Transparent Lid	Transparent Lid

* NTC : Negative Temperature Coefficient

Intended use :

GEMMY Dry Bath Incubators provides a controlled dry heat environment. Apply to incubate NDA specimens, cross matching and screens in blood bank, incubating melted agar; Enzyme assays, digestions, residue tests for milk and also great for serology, hematology, pathology and biochemistry etc. ideal for use in Hospital, Lab center, clinic, biochemistry.

Features :

DB-006E, DB-006M & DB-006E-150

- Activate auto-off function to automatically shut out heater at the end of timed cycle.
- Digital temperature display for actual temperature PV and setting SV.
- Each block has a well to accommodate a removable thermometer, which monitors temperature of blocks.
- Timer start working when the preset temperature has been stabilized ensures an accurate incubation effect.
- When complete the heat cycling, the timer will alarm and display "END".
- Memory stores the set temperature and time of previous operation, use these set points to repeat the new operation and save time, or preset your new desired set points.
- **DB-006M** accommodates 2 blocks with cover for microplate test. Comes with a handle to remove the block for safety.
- **DB-006E-150** features double wall construction with insulator by fiberglass for durability and good heat retention. Maximum temperature is designed up to 150°C capable of functioning more applications.
- **Safety devices:** Over temperature alarm; Heating failure alarm.

Blocks available :

Number	Tube size	Openings No. / Ø
DB-0630	6mm	30 / 6.5mm
DB-1020	10mm	20 / 10.5mm
DB-1220	12 or 13mm	20 / 13.5mm
DB-1612	15 or 16mm	12 / 16.6mm
DB-1812	18mm	12 / 18.6mm
DB-2012	20mm	12 / 20.7mm
DB-2506	25mm	6 / 25.7mm
DB-15E-20	1.5ml Eppendorf	20
DB-05E-20	0.5ml Eppendorf	20
DB-COM-3 (Combination)	25+12+6mm or your request	3+5+6 holes
DB-0000	Solid (no holes) used as HOT PLATE	
DB-096M	Micro-plate 96 wells	
Block size	100 x 75 x 50 (mm) 155 x 100 x 50 (mm) Micro-plate	

Constant-Temp *Water Bath*

YCW series



All Stainless Steel



YCW-010E
(Digital Timer)



YCW-010



YCW-01, YCW-04M (Analog)



YCW-05



(YCW-05: Digital)



YCW-03S

Specifications (34 Liter is also available upon request):

Model	YCW-01	YCW-04M	YCW-010 YCW-010E	YCW-03S	YCW-05
Bath Volume	22 L.	11 L.	34L, 22 & 11 L	22 L	5 L.
Overall dimension	59 x 40 x 26.5cm	39 x 33.5 x 36cm	59.5 x 39 x 45cm	59.5 x 39 x 45cm	40.5 x 20.5 x 31cm
Temp readout	Thermometer	Thermometer	LED digital	LED digital	Thermometer or Digital
Temp preset	N.A.	N.A.	N.A.	25°, 37°, 56°C	N.A.
Temperature set	Ambient~100°C	Ambient~100°C	Ambient~99.9°C	Ambient~99.9°C	Ambient~100°C
Uniformity (at 37°C)	±1°C	±1°C	±0.2°C	±0.2°C	±0.1°C
Water circulation	Stirrer	Stirrer	Stirrer	Stirrer	Stirrer
Temp control	Thermostat	Thermostat	PID	PID	Thermostat or PID
Timer	N.A	N.A	YCW-010E only	N.A.	Optional for digital
Over-heat shutout	NO	NO	Yes	Yes	Yes
Heating element	1.0 KW	1.0 KW	1.0 KW	1.0 KW	500 W
Optional	Drain + Shelf	Drain + Shelf	Drain + Shelf	Drain + Shelf	Drain + Shelf

- **Bath dimension:** 22 L: 50x29.5x15.5 cm; 11 L: 30x24x15cm; 34 L: 58.5x39.5x14.5mm
- **Optional accessories:** Gable Lid, Test Tube Rack, Lid with Concentric Rings
- **YCW-05:** Microprocessor controlled with LED digital display for **temperature** and **Timer** is also available upon request.

Features :

- Providing a desired test through a thermostatic temperature with ambient to 99.9 or 100°C. Ideal for biological, clinical research, medical, bio-chemical, industry and education laboratory.
- Molded bath with round corners and seamless stainless steel sides ensure efficient circulation and easy for cleaning.
- Equipped with immersion heating element sheathed with stainless steel, corrosion free.
- Improve temperature uniformity by rotating water stirrer to direct flow to various areas of the bath.
- Optional concentric rings cover minimizes heat loss when you suspend flasks or other vessels in the bath.
- YCW-10, YCW-010E comes with built-in microprocessor-based digital controller. Audible & visible alarm is activated and shut out power to 2°C above the set point. Timer starts working when the set temperature has been stabilized.
- Functions alarm and the display with "**END**" after the completion of the operation cycle.
- Drain valve and perforated tray are optional for extra cost to meet your requirement.
- YCW-01, YCW-04M are the most practical and economic models, but with excellent performance. Pilot lamp indicates the heater is energized and stabilized. Comes with mercury thermometer for direct readout.

Concentric Rings with Lid

Rings of inner diameter: 107, 80, 55, 31.5, 21mm
(5 openings for 22 liters and 2 openings for 11 liters)

Test Tube Racks :

13mm or 18mm x 40 (or 20) wells and others



Lid with concentric rings



Tube Rack



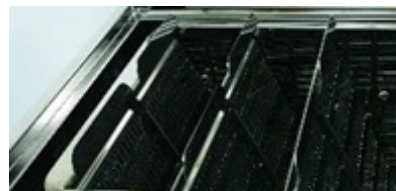
GEMMY INDUSTRIAL CORP. (Manufacturer & Exporter)
7F. No. 106, Min Chuan West Road, Taipei, Taiwan
Tel: 886-2-25531456 Fax: 886-2-25573218, 5538389
Email: gemmy888@ms14.hinet.net; gemmy888@gemmy.com.tw
<http://www.gemmy.com.tw>



Dun & Bradstreet DUNS No. 656777729
TUV Rheinland Verification 00004807 5002

Shaking Water Bath

YCW-06S



6 Brackets for 6 Bags
Double-Bag prevents contamination

Intended use :

This equipment provides a safety heating and stabilized temperature within the range from slightly above to 37.0°C. Ideal for chemical, biological, clinical and laboratory applications. It is also applied to use in Blood bank for **thawing frozen plasma** or **blood products** and other medical, biological and scientific products.

Features :

Temperature:

- Memory presets temperature at 36.5°C and 15 minutes easy for use.
- Automatically Heating if temperature less than 36.5°C when switch on power. Or alarm to decrease temperature if above 37.5°C.
- Overheating alarm to 37.5°C ensuring safety for plasma and blood
- Efficient heating function accelerating to 37°C within short time from ambient.
- Independent controls and LED display for each basket

Construction:

- Polished stainless steel chamber and baskets.
- Double-walled construction insulated with glass fiber to maintain the the temperature.
- Exterior case made by heavy gauge steel with powder coated, scratch & corrosion free.
- Drain valve help refresh water and cleaning.

Cleaning:

- Drain valve help change water. Suggest clean bath everyday.
- Do not use bleaching powder or bleaching agents for cleaning.

Double-Bag Protection:

- Comes with snap-seal bag to isolate the plasma from the internal water supply, preventing from the possible contamination.
- The Double-Bag material won't create plasticizer at 36.5°C ~ 37.0°C. No worry about water contamination.

Intended use :

- * Preheating : Power (Built-in preset 36°C and 15 min.) → Heat → Stabilized at 36.5°C
- * Defrosting : Load plasma into Magic-bag → Place into basket → Set time → Shaking → Start → Alarm (Time out) → Defrosted → Shaking OFF → Take off bag

Specifications :

Model	YCW-06S
Overall dimension	690 x 450 x 460mm approx.
Bracket dimension	140 x 90 x 250mm
Maximum capacity	6 bags, 250ml ~ 500ml each
Gross weight	31 kg
Shaking stroke	20mm reciprocal per cycle
Shaking speed	Fixed at 80 ~ 100 rpm
Defrost temperature	34°C ~ 37°C
Defrost time	15 ~ 20 minutes from the 36.5°C
Ambient temperature range	15°C ~ 32°C (Do not exceed 37°C)
Working range	Ambient ~ 37°C
Temperature accuracy	±0.1°C at 36.5°C
Temperature stability	±0.1°C at 36.5°C
Temperature resolution	0.1°C
Timer	Digital 99 minutes adjustable
Temperature control	PID
Temperature sensor	PT-100
Water circulation	Yes, water stirrer
Water drain	Yes,
Overheat alarm	Yes, alarm + cutout
Sensor error alarm	Yes alarm (Er 2)
Double safety device	Relay to shut out when overheating
Low water level alarm	Yes alarm (Er 1)
Heating element	1000W. Stainless steel sheathed,
Power source	110V or 230V, 50/60Hz
Standard accessory	Gable Lid, Bracket x 6, Double bags

Shaking Water Bath

YCW-012S, YCW-011S

Constant-Temperature Horizontal Shaking Bath GMDN code 42438



YCW-011S



YCW-012S



Digital Timer

Intended Use :

This equipment provides a safety heating and stabilized temperature within the range from slightly above to 99.9°C. Ideal for chemical, biological, clinical and laboratory applications. It is also applied to use in Blood bank for **blood products** and other medical, biological and scientific products.

Specification

Catalog no.	YCW-012S	YCW-011S
Tank capacity	22 liters approx.	11 liters
Working capacity	17.5 liters approx.	6.5 liters approx.
Chamber	500 x 300 x 150mm	300 x 240 x 150mm
Overall dimension	740 x 335 x 360mm	530 x 300 x 310mm
Temperature setting	Digital, 3-digit	
Temperature readout	LED digital	
Timer (Option)	99 Hr. 59 min. + HOLD	99HR.59MN + HOLD
Shaking speed	Adjustable 20 – 200 rpm	
Temperature control	Microprocessor control, P.I.D.	
Temperature sensor	PT-100	
Temperature range	Ambient to 99.9°C	Ambient to 70°C
Temperature resolution	0.1°C	
Over temperature cutoff	Yes, (2°C to the set point)	
Shaking stroke	20mm reciprocal per cycle	
Drain valve	Yes	
Stability	±0.05°C at 37°C	
Uniformity	±0.1°C	
Low water cutoff	Yes	
Water circulation	Yes, circulating Stirrer ensures uniform temperature	
Wattage consumption	1KW(Heater)+25W(M) 600W(Heater)+6W(Motor)	
Optional accessories	- Flasks platform (Clamps included) - Test tube Spring rack (springs included)	
Standard accessory	Wire tube rack, 13 & 18mm x 40 tubes x 1 pc Sprint bungee cord x 2 pc for flasks	
Power source	110V or 230V, 50Hz or 60Hz	

Specifications are subject to change without advanced notice

Optional Accessories

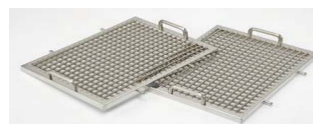
A) Platform + Clamp for Flasks



Cat. No.	Flasks	Number
FP-025	25 ml	20 clamps
FP-050	50 ml	20 clamps
FP-125	125 ml	12 clamps
FP-250	250 ml	6 clamps
FP-500	500 ml	4 clamps
FP-1000	1000 ml	2 clamps

B) Spring Rack for Tubes

Applied to 5ml ~ 50ml Centrifugal tubes



Technical Data :

- This equipment combines the features of heated bath and mechanical shaking function to agitate samples. Intended use for biology, biochemistry, industry and pharmacology applications.
- Choice of digital or analog setting to meet your requirement. Built-in circulating stirrer ensures uniform bath temperatures.
- Heating lamp indicates the heating element is energized
- When the set temperature is stabilized, the heating lamp becomes blinked or snuffed out.
- Tube rack and flask platform can be raised and lowered to suit the lengths of different vessel and test tubes. They are detachable and easy for installment.
- Seamless stainless steel inner chamber with round corners gives added strengths and easy for clean.
- Steel outer housing with powder coating, corrosion and scratch free.
- An induction motor produces a 20mm circular motion with 0 dB, maintenance free.



GEMMY INDUSTRIAL CORP.

7F. No. 106, Min Chuan West Road, Taipei, Taiwan

Tel: 886-2-25531456

Fax: 886-2-25538389, 25573218

Email: gemmy888@gemmy.com.tw; gemmy888@ms14.hinet.net

Http://www.gemmy.com.tw

Manufacturer & Exporter:



Dun & Bradstreet DUNS No. 656777729
TUV Rheinland Verification 000004807 5002

Vortex Mixer

Model	VM-300	VM-300P
Dimension	130 x 160 x 180mm	139 x 153 x 147mm
Eccentric Ø	5.6mm	4.4mm
Operating Modes	Touch / Switch	Touch / Switch
Speed (single tube)	80 ~ 3150rpm (±10%)	700~3200rpm (±10%)
Standard accessory	Single tube head	Single tube head
Optional accessory	3" head only	Various head cups
Net weight	5.0kg	3.8kg



VM-300P

Features :

- Various speed control to the maximum of 3200rpm, provided gentle or vigorous vortexing for your mixing needs.
- 2 interchangeable mixing head, i.e. snap on the 26mm diameter rubber cup head for conventional single tube mixing, or a 3" diameter platform pad for multiple tubes and one flask mixing.
- 2-mode operation features "TOUCH" for intermittent operation, or "SWITCH" activated operation at the flip of a switch for continuous mixing.
- Stirring intensity can be controlled in "TOUCH" mode by applying the pressure to the mixing pad.
- User-friendly design capable of sustaining to prevent mixer from slipping and creeping due to the vibration.



VM-300

Specifications :

Catalogue #	VM-3001	VM-3002	VM-3003	VM-3004
Dimension	Ø25.4mm (1")	Ø210mm	Ø210mm	Ø 83mm
Material	Polyurethane	Formed PE	Formed PE	NBR rubber
Capacity	Single tube	<u>Eppendorf</u> 1.5/3.0ml x 30 0.5ml x 30 tube	<u>Micro-plate</u> 96 wells	<u>Flasks</u> Max 83mmØ



Pipette Shaker

Specification :

Model	PS-2A	PS-8B
Dimension	140 x 155 x 150mm	175 x 170 x 115mm
Capacity	6 places	8 places
Timer	Mechanical 60 min.	N/A
Net weight	2.4 kg	1.6 kg

Feature :

- Equipped with 2-prong pipette clamps for 6 or 8 pipettes operation.
- PS-2A features 2-mode operation, i.e. "SWITCH" activated for continuous operation, or "TIMER" activated operation to preset time up to 60 minutes.
- Turn switch to ON position for continuous operation, or turn to TIME position then dial present your desired time for intermittent operation.
- Pilot lamp indicates the power is switched on when the continuous operation is starting.
- PS-8B features various speed controls by turning the speed regulator
- Inexpensive cost ideal for laboratory clinic or education.

PS-2A



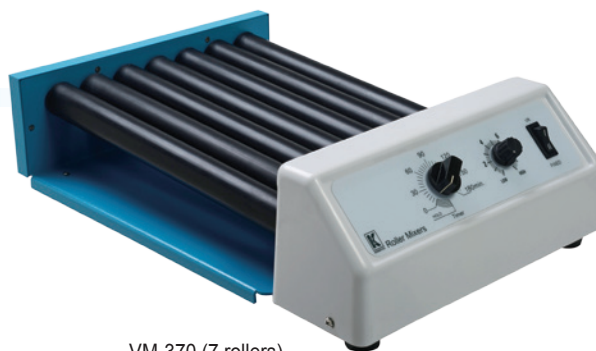
PS-8B



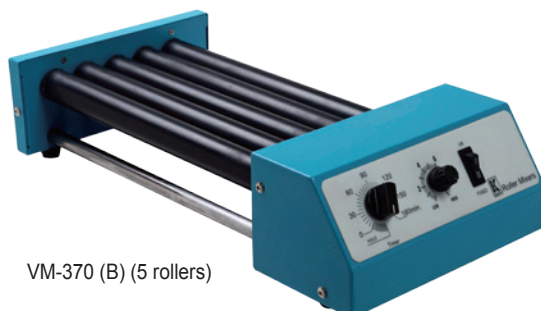
Roller Mixers

3-Dimentional Rocking Rolling.

- Fixed speed and Adjustable
- 2 modes of operation: Timer and Switch



VM-370 (7 rollers)



VM-370 (B) (5 rollers)



Features :

- GEMMY Roller Mixers have been designed with functions, reliability and safety in mind, providing a gentle and quiet rocking and rolling mixing at a fixed speed of 40rpm or adjustable speed from 10 – 40rpm for blood samples, Reagents, viscous substances Bottles are also available and others that rocking and rolling action is required.
- The rocking and rolling action is motioned simultaneously by the built-in POM gears quietly and smoothly.
- 19mm diameter eccentric to produce 3-dimension rocking at both sides.
- Operates for continuous or set time for intermittent operation up to 180minutes with HOLD function.
- Choice of 7 rollers (VM-370) or 5 rollers (VM-370B) to meet your requirements.

Modes of Operation:

Fixed speed at 40rpm or adjustable from 10 ~ 40rpm (±3rpm)

【 Set fixed speed to 40rpm by pressing switch to FIXED position or set adjustable speed by pressing switch to VR position 】

1. Timer activated for intermittent operation
2. Timer HOLD for continuous operation

Specifications :

Model	VM-370	VM-370 (B)
Overall dimension	450 x300 x 125mm approx.	455 x 230 x 115mm approx.
Net weight	6 kg (13.3 Lb.) approx.	5 kg (11.1 Lb.)
Roller number	7 rollers	5 rollers
Roller size	32mm (Ø) x 320mm (L)	32mm (Ø) x 320mm (L)
Speed (Fix & adjustable)	Fix at 40rpm (±3rpm) or adjustable from 10 ~ 40 rpm.	Fix at 40rpm (±3rpm) or adjustable from 10 ~ 40rpm
Motor	Gear motor 24V, 5.17W	Gear motor 24V, 5.17W
Timer	Mechanical 180 minutes + HOLD	Mechanical 180 minutes + HOLD
Operation	2 modes for Continuous or timer activated Intermittent	2 modes for Continuous or Timer activated for intermittent
Rocking range	19mm diameter	19mm diameter
Max load	6 kg (13.2 Lb.)	5 kg (11 Lb.)
Current	110V/0.03A; 220V/0.012A	110V/0.03A; 220V/0.012A
Power source	110V or 230V, 50/60Hz	110V or 230V, 50/60Hz

(Specifications are subject to change without advanced notice)

Loading Capacity

Tubes / Models	VM-370 (7 rollers)	VM-370(B) (5 rollers)
5ml	18 tubes	12 tubes
10ml, 15ml,	12 tubes	8 tubes
50ml	12 tubes	8 tubes

Remarks: Bottles is also available to be used

Orbital Shakers

VRN-480



VRN-480 with Cradle

VRN-360



VRN-200



VRN-210

Specifications : (Subject to change for improvement without advanced notice)

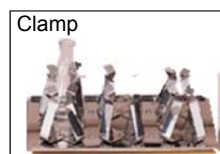
Model	VRN-200	VRN-210	VRN-360	VRN-480
Overall dimension	292 x 292 x 175mm	215 x 200 x 130mm	300 x 320 x 200mm	400 x 200 x 216mm
Platform dimension	263 X 263mm	215 x 175mm	263 x 263mm	422 x 282mm
Speed range (±3%)	75 x 250 rpm	75 x 250 rpm	75 x 250 rpm	40 – 400 rpm
Orbit size (dia.)	21mm	21mm	21mm	25.4mm
Load at 100 rpm	1 kg	1 kg	1 kg	15 kg
Accuracy at 100rpm	±5 rpm	±5 rpm	±5 rpm	±5 rpm
Net weight	4.2kg	2.2 kg	3.2 kg	14.8 kg
Speed readout	N.A.	N.A.	Tachometer	Tachometer LED
Eccentric	One	One	One	3
Operation	Switch / Timer	Switch / Timer	Switch / Timer	Switch / Timer
Fixed speed (Optional)	130rpm or 100 rpm	130rpm or 100rpm	130rpm or 100 rpm	130rpm or 100rpm

- Note:**
- For counting accurate speed tolerance and acceptable range, please refer to user manual page 5.
 - Speed accuracy is attributed to the stabilization of the local power source.

VRN-480 Flask clamps

Code	Volume of Flask	Ø of flask	Total No. of held
GE-125	125 ml	71 mm	15 pc
GM-250	250 ml	85 mm	11 pc
GE-500	500 ml	107 mm	6 pc
GE-1000	1000 ml	147 mm	2 pc

Optional accessory for Clamp or Cradle



Cradle: 415 x300mm (±5mm)
Capacity: 100ml/125ml x 16pc



Features :

- Economical, yet designed for long-term uniform mixing. Ideal for mixing test solutions in micro-titration assays, and also for use in hematology, urology, or EIA/ELISA immunology. Applications for Alpha, Kline, Mazzini, Syphilis, Pregnancy and others.
- Textured non-slip rubber foam mixing pad holds various sizes of culture plates, flasks, and test tube racks by means of friction.
- Set speed from 75 ~ 250rpm. Also designed for fixed speed shaking at 130rpm or any other values
- Contoured platform allows VRN-210 to hold three 96-well micro plates and six plates for VRN-200 and VRN-360.
- Operate continuously or set time for intermittent shaking up to 60 minutes.

VRN-480:

- Triple eccentric drive mechanism and counterbalance provide a vibration free 3/8" orbit at high speeds, even under heavy of imbalanced loads. The solid-state controlled shaker speed is from 40 ~ 400rpm.
- Choice of platforms i.e. Non-clamp or platform includes four-prong stainless steel clamps or cradle to hold Erlenmeyer flask
- Unit displays speed on an analog tachometer or a 3-digit LED. Speed readout helps improve the repeatability of your test procedures.
- The shaker platform rotates on six permanently lubricated, sealed ball bearings. The entire drive, housed in a precision machine, sits on four cushioned feet that prevent creeping
- Set switch for continuous operation or set time for intermittent operation for timed shaking up to 180 minutes.



GEMMY INDUSTRIAL CORP. (Manufacturer & Exporter)
7F. No. 106, Min Chuan West Road, Taipei, Taiwan
Tel: 886-2-25531456 Fax: 886-2-25538389, 25573218
Email: gemmy888@gemmy.com.tw; gemmy888@ms14.hinet.net
Http://www.gemmy.com.tw



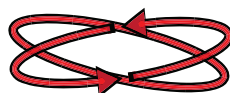
Dun & Bradstreet DUNS No. 656777729
TUV Rheinland Verification 000004807 5002

Rocking Shakers

VRN-380A, VRN-380B

3-Dimensional Motion

Model: VRN-380A (Digital Timer)
VRN-380B (Mechanical Timer)



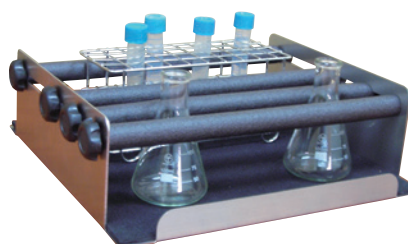
Specifications :

Model	VRN-380A	Digital timer 99min. & HOLDE+ Digital Tachometer + Brushless motor
	VRN-380B	Mechanical timer 180min.& HOLD + Dial speed meter + Brush motor
Overall dimension	305 x 335 x 205mm (W x D x H)	
Platform dimension	300 x 300mm (11.81" x 11.81")	
Speed range	30 – 300 rpm adjustable	
Shaking angle	0, 5, 10, 15, 20 degree, adjustable	
Orbit size	18mm diameter	
Maximum load	3 kg (7.5 Lbs.)	
Shipping weight	14kg (30.9 Lbs.)	
Power source (AC)	100 ~240VAC	
Standard accessory	Nonslip rubber mat	
Optional accessory	Cradle. Positions adjustable	

Loading capacity : (Rubber Mat)

96-well Microplate:	6 pc
10/15ml centrifugal tubes	26 pc (Ø16mm or 17mm)
5ml centrifugal tubes:	51pc (Ø13.0mm)
2ml centrifugal tubes:	114pc (Ø10.8mm)
1.5ml Eppendorf tubes:	114pc(Ø10.8mm)
0.6ml Eppendorf tubes	160pc (Ø 7.9mm)

Optional Accessory :



Technical Data :

- Rocking motion shakers provide a rocking motion or a consistent 3-dimensional rocking motion. Use for gentle and uniform mixing of blood samples, cell suspensions, dye fixations and solutions in test tubes, flasks, or bottles. Ideal for applications requiring gentle, low-foaming agitation and uniform mixing of lab samples – immunoassays, hybridizations, mixing blood samples, cell cultures and DNA extractions.
- Rubber dimpled platform accepts different sized centrifugal tubes that does not need the additional racks or clamps.
- Select from fixed-speed, fixed-shaking angel or adjustable-speed angle give you maximum control over sample agitation to meet your application purpose.
- Comes with a 30 x 30cm dimpled non-slip rubber mat suitable for different tubes simultaneously. Apply to different tubes up to 11mm diameter.
- Adjustable "tilt" lets you choose rotation angle and circulate liquid up/down/sideways and around ensuring complete mixing.
- Digital timer up to 99 minutes display and adjustable with 1 minute resolution.
- Shaking angle from horizontal to 20°. Variable speed controls let you adjust the exact agitation desired for staining, blotting and hybridization.
- Designed for molecular biology applications requiring constant rocking.

Hot Air Oven Sterilizer



YCO-010 (Microprocessor)



YCO-N01



YCO-N01 (Digital)



All Stainless Steel

Specifications :

Model	YCO-N01 (Analog)	YCO-07, YCO-N01 (Digital)	YCO-010 (Microprocessor)
Chamber	Stainless steel SUS#304	Stainless steel SUS#304	Stainless steel SUS#304
Temperature range	Ambient + 5°C to 250°C	Ambient + 5°C to 250°C	Ambient + 5°C to 250°C
Control system	Analog	Microprocessor controlled system	Microprocessor controlled system
Temperature control	EGO thermostat	PID	PID
Temperature display	Mercurial thermometer	Digital LED	Digital LED
Sensor	Hydraulic expanded	"K" type	"K" type
Standard Accessory	2 stainless steel shelves	2 stainless steel shelves, interval is adjustable	2 stainless steel shelves, interval is adjustable
Capacity available	16L, 34 L, 53 L, 75 L, 110 L.	16L, 34 L, 53 L, 75 L, 110 L.	16L, 36 L, 57 L, 75 L, 110 L.
Timer	Mechanical, 180min + HOLD	Mechanical, 180min + HOLD	Digital, 99hr. 59min + HOLD
Temperature setting/Display	Analog / Thermometer	Digital LED	Digital LED
Temperature uniformity	±7°C at 180°C	±3°C at 180°C	±3°C at 180°C
Temperature stability	±1°C at 180°C	±0.1°C at 180°C	±0.1°C at 180°C
Resolution	1°C	1°C	1°C
Over-heat alarm & shutout	Yes, At 220°C	Yes, 10°C above the set point	Yes, 10°C above the set point
Air convection	Natural convection	Natural convection	Forced convection by fan
Air vent	Yes,	Yes	Yes
Quality standard	ISO, CE, GMP, FDA, Japan	ISO, CE, GMP, FDA, Japan	ISO, CE, GMP, FDA, Japan

- Option:** - All stainless steel exterior case,
 - No-fuse current leakage breaker with O.C.
 - Castors (Wheels) easy for delivery
 - Other capacities available, (90 L, 150 L, 200 L, 250 L.)

Castors



Technical Data :

- GEMMY Hot Air Oven is designed for general application in variety of baking, drying, conditioning, preheating, curing for dry content analysis, chemical resistance studies, glassware drying, dry sterilizer etc.
- Heavy-gauge glass fiber insulation sustains to prevent the heat loss and maximize energy efficiency.
- Comes with Double wall of exterior steel treated by powder coating ensures scratch free and corrosion free.
- The height of stainless steel wire-rod shelf is adjustable in order to meet the sample dimension.

YCO-010 (YCO-N01 Digital)

- Function preheating with timer working only when the actual temperature at 2°C below set point.
- LED digital set and display for Power, Heating, PV, SV, Alarm, Timer and Operation Safety devices
- Over temperature alarm and shutout device to 10°C above the set point.
- Sophisticated design to shut off power protecting sterilizer from excessive heating at 220°C if primary control fails.
- Audible & visible alarm indicated by indicator.
- Timer stop counting when PV is 5°C below SV after stabilization if door is opened, the memory will store the past time and start to count when the PV value returns to 2°C below SV.
- **YCO-N01** is designed when the cost is the major consideration to the users. Natural convection is used when the accurate temperature control and uniformity are not critical important to users and your samples can't be disturbed by air current.

Laboratory Incubator



IN-010



IN-601



IN-601 (Digital)



Available for Stainless steel

Technical Data :

- GEMMY Incubator is designed for general application in fields of biotechnical, reagent, microbiological studies for issue and virus incubator
- Heavy-duty glass fiber insulation sustains to prevent the heat loss and maximize energized efficiency.
- Double wall of exterior steel treated by powder coating ensures scratch free and corrosion free.
The height of stainless steel mesh shelf is adjustable in order to meet the sample dimension.
- A tempered glass window on front door is easy for monitoring specimens, which does not required to open the outer door so as to prevent from the possible disturbing the samples

- Option:**
- All stainless steel
 - No-fuse current leakage breaker with O.C.
 - Other capacities available
 - Castors easy for delivery

Castors



Specifications :

Model	IN-601 (Analog)	IN-607, IN-601 (Digital)	IN-010 (Microprocessor)
Chamber	Stainless steel SUS#304		Stainless steel SUS#304
Temperature range	Ambient + 5°C to 75°C		Ambient + 5°C to 75°C (Adjustable)
Control system	Analog		Microprocessor controlled system
Temperature control	EGO thermostat		PID
Temperature display	Mercurial thermometer		Digital LED
Sensor	Hydraulic expanded		PT-100
Standard Accessory	2 stainless steel shelves		2 stainless steel shelves, interval is adjustable
Capacity available	16L, 34 L, 53 L, 75 L, 110 L.	16L, 34 L, 53 L, 75 L, 110 L.	16L, 36 L, 57 L, 75 L, 110 L.
Timer	Mechanical, 180min + HOLD	Mechanical, 180min + HOLD	Digital, 99hr. 59min + HOLD
Temperature setting/Display	Analog / Thermometer	Digital LED	Digital LED
Temperature uniformity	±4°C at 37°C	±2°C at 37°C	±2°C at 37°C
Temperature stability	±3°C at 37°C	±0.1°C at 37°C	±0.1°C at 37°C
Resolution	1°C	0.1°C	0.1°C
Over-heat alarm & shutout	Yes, At 80°C	Yes, 4°C above the set point	Yes, 4°C above the set point
Air convection	Natural convection	Natural convection	Forced convection by fan
Air vent	Yes,	Yes	Yes
Quality standard	ISO, CE, GMP, FDA, Japan	ISO, CE, GMP, FDA, Japan	ISO, CE, GMP, FDA, Japan

IN-010 (IN-601 Digital)

- Function preheating with timer working only when the actual temperature at 2°C below set point.
- LED digital set and display for Power, Heating, PV, SV, Alarm, Timer and Operation
- **Safety devices :**
 - Over temperature alarm and shutout device to 4°C above the set point.
 - Sophisticated design to shut off power protecting sterilizer from excessive heating at 75°C if primary control fails.
 - Audible & visible alarm indicated by indicator.
 - Timer stop counting when PV is 5°C below SV after stabilization if door is opened, the memory will store the past time and start to count when the PV value returns to 2°C below SV.
- **IN-601** is designed when the cost is the major consideration to the users. Natural convection is used when the accurate temperature control and uniformity are not critical important to users and your samples can't be disturbed by air current.

Laboratory Shaker Incubator

IN-666



Incubator :

Capacity Dimension Heater Platform for shaker	Capacity	Chamber	Heating element	Platform for shaker
	75 L.	600 x 540 x 720mm	350 W	485 x 420mm
	90 L.	600 x 540 x 790mm	350 W	485 x 420mm
	110 L	660 x 560 x 800mm	500 W	545 x 435mm
	150 L	560 x 650 x 970mm	500 W	545 x 435mm
Working temperature	Ambient + 5°C to 75°C adjustable			
Temperature uniformity	±1°C at 37°C			
Temperature stability	±0.1°C at 37°C			
Temperature control	PID			
Sensor	PT-100			
Resolution	0.1°C			
Lamp	Yes, 23 W			
Timer	LED digital set and display, 99 hours 59 minutes + HOLD (indefinite)			
Indicators	LED lamps for Power, Heat, PV, SV, Alarm, Time, Operation, Speed			
Safety devices	- Over heat alarm & shutout to 2°C above set point. - Memory to store the temp and the past time if door is opened during operation.			
Standard accessory	2 stainless steel shelves + 1 stainless steel platform & rubber sheet for shaker			
Optional accessory	Stainless steel clamp for flasks 125ml, 250ml, 500ml			
Quality standard	ISO9001, ISO13485, CE marking, GMP, FDA			

- Designed for microbiological studies for tissue culture and viruses incubation.
- Heavy duty and double-walled enclosure for durability and good heat retention. The outer housing is finished by powder coat with baked enamel. Stainless steel SUS#304 interior chamber ensures corrosion and scratch free.
- The fiberglass insulation with silicon (or EPDM) door gasket prevents heat loss and maximizes energized efficiency.
- A viewing window made by tempered glass on door and also interior lamp allows for monitoring sample without opening door to disturb chamber environment. Tempered glass inside door is optional to meet your requirement.
- System will suspend incubating and shaking action when door is opened during operation. The memory will store the remaining time.
- Timer suspends counting should chamber temperature is 5°C below set point until the temperature returns to set point.
- When the entire cycle is completed, the words "END" will display on the screen and alarm sounds.

Shaker :

- Triple eccentric drive mechanism with 6 lubricated and sealed ball bearings produces a 1" diameter circular motion and is counter-balanced to ensure smooth, vibration-free operation at any speed even under heavy or imbalanced loads.
- A 25W motor is isolated by a metal plate to prevent possible damage caused by spilled liquid or broken glass.
- The shaking action will stop should door is opened during operation.
- Platform is available for various types of vessel, bottles, flasks and 96-well microplate.

Specifications :

Platform (stainless steel)	75 L	495 x 420 x 350mm			
	90 L	495 x 420 x 420mm			
	110 L	550 x 440 x 460mm			
	150 L	440 x 550 x 620mm			
Orbit diameter		Ø 25.4mm (1")			
Speed, digital display		40 – 400 rpm adjustable			
Clamp (Option)	Flasks	75 L	90 L	110L	150L
	125ml	20 pc	20 pc	24 pc	24 pc
	250ml	16 pc	16 pc	20 pc	20 pc
	500ml	9 pc	9 pc	12 pc	12 pc
	1000ml	3 pc	3 pc	3 pc	3 pc

PORTABLE SUCTION UNITS

SU-990: Rechargeable Lithium-ion battery AC/DC Operated

Built-in **voltage stabilizer within 95V~245V** preventing from volt surge accidently.

The whole area voltage from **100V~240V**, 50/60Hz except SU-510

Oil-less vacuum pump, quiet and maintenance free



SU-990
(Battery operated)



SU-660



SU-991
(AC/DC)



SU-510 (Also available for minor surgery)



Option for:

- 2 x 1.0 L. bottles
- Footswitch

Specifications :

Model	SU-990	SU-991 (AC/DC)	SU-660	SU-510
Dimension approx.	200 x 355 x 240mm	200 x 355 x 240mm	450 x 205 x 275mm	420 x 280 x 275mm
New/Gross weight	3.0/4.3kg	2.7/4.0kg	3.0/4.2kg	6.0 / 7.0kg
Vacuum pump	Oil-less pump	Oil-less pump	Oil-less pump	Oil-less, 110W (UN-45VH)
Airflow rate (LPM, approx.)	20~22 L. (±10%)	20~22 L. (±10%)	20~22 L. (±10%)	50 L. (±10%)
Vacuum capacity (±10mmHg)	0 ~ 650mmHg	0 ~ 650mmHg	0 ~ 650mmHg	650 ~ 670mmHg
Overflow prevention	Yes	Yes	Yes	Yes
Operation	AC / DC 12V	AC / DC 12V	AC	AC
Power source (AC)	100 ~240VAC	100 ~ 240VAC	100 ~ 240VAC	110V or 230V, 50/60Hz
Battery (not include)	Lithium-ion	NA	NA	NA
Footswitch	NA	NA	NA	Optional for extra cost

Standard accessory: Silicone suction tubing x 1pc + 1000ml polycarbonate bottle (autoclavable and reused) + Bacterial Filter

Optional accessory: 1) Footswitch, 2) 2 bottles for SU-510, 3) LED digital vacuum gauge

Technical Data :

- Equipped with oil-less piston vacuum pump ensures lubrication free and maintenance free
- A 1000ml autoclaveable polycarbonate collection jar graduated in "ml" with fluid overflow preventive fitting.
- Built-in vacuum gauge ranges 0 ~ 760mmHg (0 ~ 30inHg) easy for direct reading.
- All models are CE-certified complied with EMC requirement of EN60601-1/IEC60601-1-2/CISPR 11, Class B / IEC61000-3-2/IEC61000-3-3 and ENISO10079-1:2009

SU-990 : (Rechargeable Sealed Lead-Acid Battery for EMERGENCY purpose)

- Built-in charging cable available for use in ambulance or anyplace where 12VDC is available for emergency.
- Sealed Acid-Lead or Lithium-Ion 12V rechargeable battery to charge by AC or DC power in 2 hours approx. to the full load.
- 1.5 hours can be used from the full charge of battery. Ideal for use in areas where the failure of mains power, unstable current or the blackout occurs every often. Light weight less than 3 kg convenient to carry anywhere.
- SU-991 is operated in AC power and also applied to operate in ambulance and car by the attached plug-in cable, but no rechargeable battery is applied. (AC /DC 12V, but not battery operated)
- SU-991-2: Another choice for infant use or for anyone who can't tolerate high negative vacuum. Dual AC/DC power available for use in car.



GEMMY INDUSTRIAL CORP. (Manufacturer & Exporter)
 7F. No. 106, Min Chuan West Road, Taipei, Taiwan
 Tel: 886-2-25531456' Fax: 886-2-25573218, 5538389
 Email: gemmy888@ms14.hinet.net; gemmy888@gemmy.com.tw
<http://www.gemmy.com.tw>;



Dun & Bradstreet DUNS No. 656777729
 TUV Rheinland Verification 000004807 5002

Mobile Suction Units

SU-305, SU-305P

(Super-Power) For surgery or other purposes

(GMDN Code #36777)

Intended use:

An assembly of devices designed to evacuate fluid, tissue, gas, or other foreign materials from body cavity or lumen by means of suction. It generally consists of a mains electricity (AC-powered) suction pump, tubing, plastic/glass collection container(s), a vacuum gauge, a vacuum control knob, an overflow trap, a moisture filter, and possibly a microbial filter. The pump creates a vacuum in the suction tubing, which is inserted into the body for the removal of materials into the collection container. This system can be used in a wide variety of settings within healthcare facilities.

NOTE: The suction tubing & accessories are the applied part that does not touch the patient directly. The equipment is not intended for unattended use.

Standards:

- Council Directive 93/42/EEC on Medical devices classified as Class IIa.
- EN60601-1, IEC60601-1, EN55011, EN61000-3-2, EN61000-3-3
- EN ISO10079-1:2009/ISO10079-1:1999



SU-305P

Specifications:

Model	SU-305		SU-305P	
Overall dimension	510x 380 x 880mm (W.D.H)		585x 380 x 930mm (W.D.H.)±10mm	
Vacuum pump	Oil rotary	Oil-less (JP-60V)	Oil rotary	Oil-less (JP-60V)
Max airflow rate ±5%	48 L/min	70 L./min	48 L/min	70 L./min
Max vacuum mmHg	700 ~ 740	700mmHg (±5%)	700 ~ 740	700mmHg (±5%)
Weight (±0.5kg)	27.5 kg	24.0 kg	29.5kg	23.5 kg
Collection jars	3000ml x 2pc polycarbonate		3000ml x 2pc, polycarbonate	
Overflow protection	Yes		Yes	
Vacuum gauge	0-760mmHg (0-30inHg)		0-760mmHg (0-30inHg)	
Standard accessory	2500 ~ 3000ml jar x 2pc, Suction tubing x 1pc Footswitch x 1pc, Microbial filter X 1pc		2500 ~ 3000ml jar x 2pc, Suction tubing x 1pc Footswitch x 1pc, Microbial filter x 1pc	
Optional accessory	Suction cup, Cannula tubing		Suction cup, Cannula tubing	
Quality standard	ISO9001, ISO13485, ISO10079-1 CE Marking, GMP,		ISO9001, ISO13485, ISO10079-1 CE Marking, GMP	



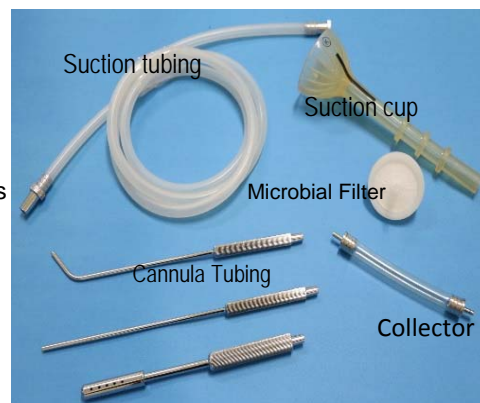
SU-305

Features:

- Dial regulate control knob to the max vacuum aspiration rate from LOW to HIGH. Capable of sustaining sufficient vacuum for most suction environment.
- The bottle can be changed over automatically once one bottle is full.
- Footswitch is used when the intermittent suction is needed.
- Mounted with 4 rubber anti-static castors with 2 lockable facilities.
- Silicone suction tubing and PC jars are autoclavable and reused.
- Mounted with the **check** valve preventing fluid from flowing to motor or bottles
- **SU-305:** Come with a **LOCKER** on back convenient for storage.
- **SU-305P:** Exterior housing is made of heavy duty ABS, scratch/rust free

Optional Accessories :

- Cannula tubing 3pc/set
- Silicone suction cup 60/70mm



GEMMY INDUSTRIAL CORP. (Manufacturer & Exporter)
7F. No. 106, Min Chuan West Road, Taipei, Taiwan
Tel: 886-2-25531456; Fax: 886-2-25538389, 25573218
Email: gemmy888@gemmy.com.tw; gemmy888@ms14.hinet.net
Http://www.gemmy.com.tw



Dun & Bradstreet DUNS No. 656777729
TUV Rheinland Verification 00004807 5002

High Pressure Steam Autoclave



SA-232



SA-232X



SA-252F



SA-300VF



TC-series



SA-300H



HL-340, 341

HL-342, 343



SA-260FA, 260MA



SA-300MA

Specifications :

Model	SA-232	SA-232X	SA-252F	SA-300H	SA-300VF	SA-300VM	SA-230MA SA-260MA	SA-230FA SA-260FA
Capacity	16 L.	16 L.	24 L.	40 L.	50 L.	40 L. Class B	16 L. Class B 24 L. Class B	16 L.
Temperature (°C)	122°C only	115 – 134	121 – 132	121 – 132	121 – 132	121/135°C	121 , 135 121 , 135	121 , 135 121 , 135
Drying	Manual	Manual	Automatic	Automatic	Automatic	Automatic	Automatic	Automatic

Model	HL-340 / 341	HL-342 / 343	HL-342P	HL-343P	TC series (All stainless steel)
Capacity	49 L / 72 L. Stainless steel	49 L / 72 L.	49 L	72 L	530; 424; 339; 283; 196 143; 113; 83; 77; 56 L.
Temp (°C)	120 – 132°C	120 – 132°C	120 – 132°C	120 – 132°C	121 – 134°C
Auto Drying	Option	Option	Automatic	Automatic	Option

- Ideal for sterilization of wrapped, unwrapped, liquid, surgical tools, metal, labwares etc. in hospital and clinics.
- TC series functions automatic drying, safety lid lock by pressure, automatic water filling, pre-vacuum & Dry vacuum etc. which are optional for extra costs.
- SA-300VM, SA-230MA, SA-260MA are Class B autoclaves.
- Quality guaranteed and services guaranteed.
- Contact us for more details.



GEMMY INDUSTRIAL CORP.

Office: 7F. No. 106, Min Chuan West Road, Taipei, Taiwan

Tel: 886-2-25531456 Fax: 886-2-25538389 , 25573218

E-mail: gemmy888@gemmy.com.tw ; gemmy888@ms14.hinet.net

<http://www.gemmy.com.tw>



CE FDA



Dun & Bradstreet DUNS No. 656777729
TUV Rheinland Verification 000004807 5002